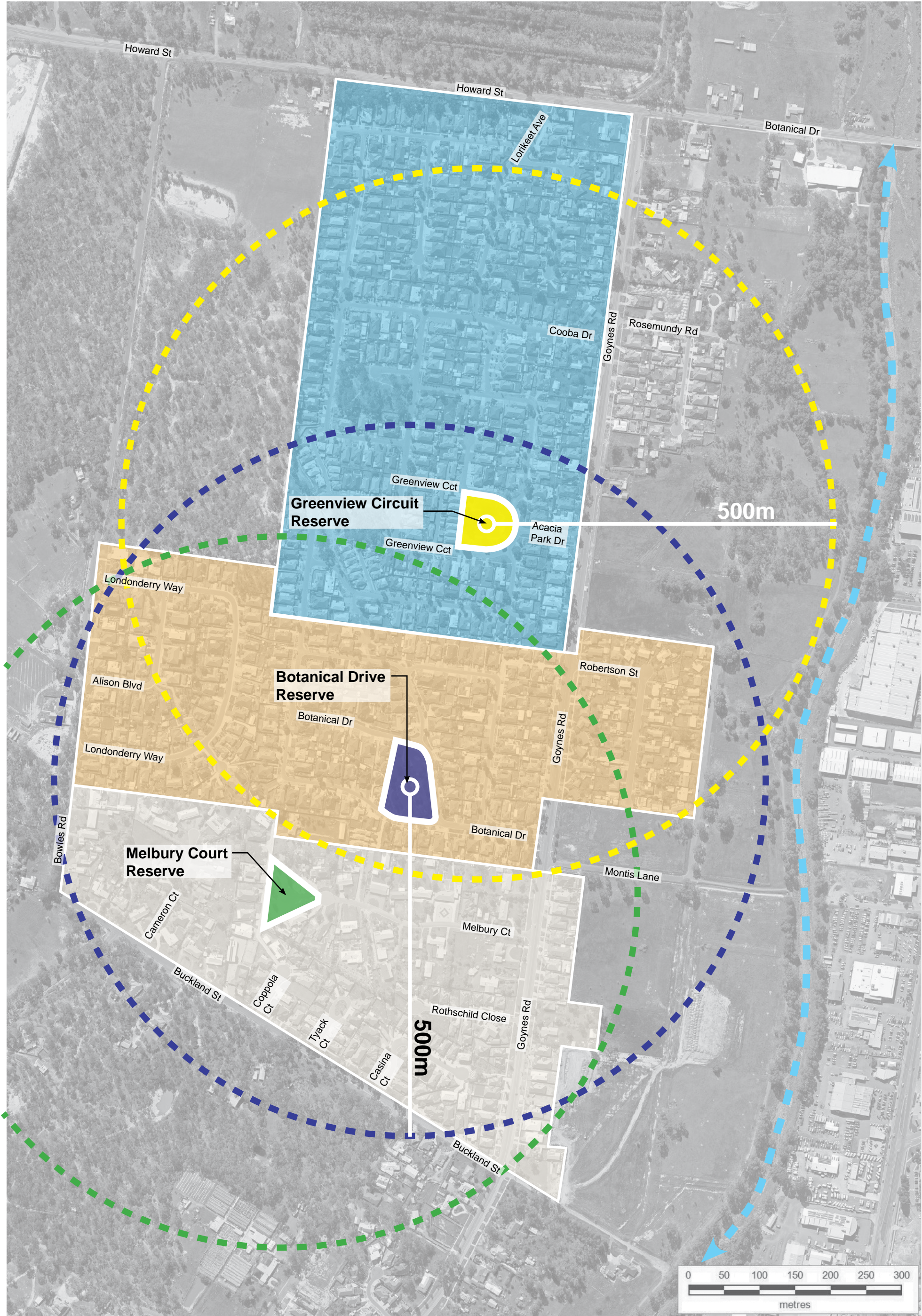


ATTACHMENT 1 – EXISTING EPSOM PLAY SPACE DISTRIBUTION



KEY:

Catchment 1 395 Properties	Greenview Circuit Reserve	Bendigo Creek
Catchment 2 260 Properties	Botanical Drive Reserve	
Catchment 3 175 Properties	Melbury Court Reserve	



*Have your say...*

Please tell us what you think! Please provide feedback here (include a separate sheet if required) then fold, stick/staple this form together and post it for free. **All submissions must be received no later than Friday November 8, 2019.**

This image shows a single sheet of white paper with horizontal blue or grey ruling lines. The lines are evenly spaced and run across the width of the page. There are approximately 20 lines visible. The paper has a slightly textured appearance and is set against a dark background.

No stamp required  
if posted in Australia

BOTANICAL DRIVE | *Play space renewal*

In Greater Bendigo play spaces are categorised as either neighbourhood, suburban or municipal in accordance with the City's Public Space Strategy.

There are approximately 110 neighbourhood play spaces in Greater Bendigo. Neighbourhood play spaces are designed to service an area of up to 400m from the site (5min walk) and have a limited variety of play experiences.

If you would like to provide feedback please complete the 'Have your say' section of this bulletin and mail it back to us by Friday November 8, 2019. We look forward to receiving your feedback.

For further information contact:

City of Greater Bendigo  
195-229 Lyttleton Terrace  
PO Box 733, Bendigo VIC 3552  
Ph: (03) 54346 370  
Email: [playspace@bendigo.vic.gov.au](mailto:playspace@bendigo.vic.gov.au)

Have your say...

**Attend a Community Discussion:**  
**Wednesday November 6, 2019 at 6:00pm**

**15 Botanical Drive, Epsom**

Email:  
playspace@bendigo.vic.gov.au

**Phone:**  
(03) 5434 6370

Fill out the form on the back of this bulletin.

Feedback will be required by  
**Friday November 8, 2019**

   [www.bendigo.vic.gov.au](http://www.bendigo.vic.gov.au)

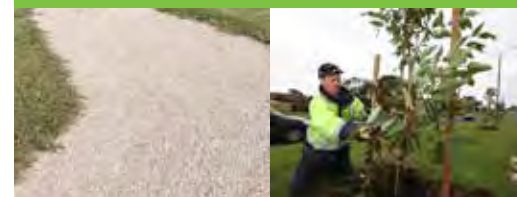
BOTANICAL DRIVE | *Play space renewal*

16/10/2019



## Botanical Drive Play Space renewal

## Features



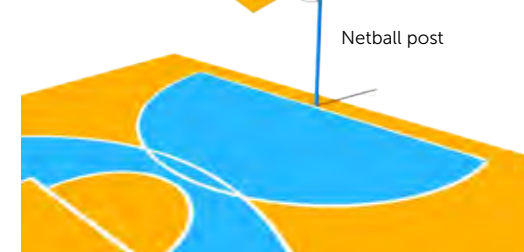
Repaired path &amp; new trees



Multi goal unit



Nethall post



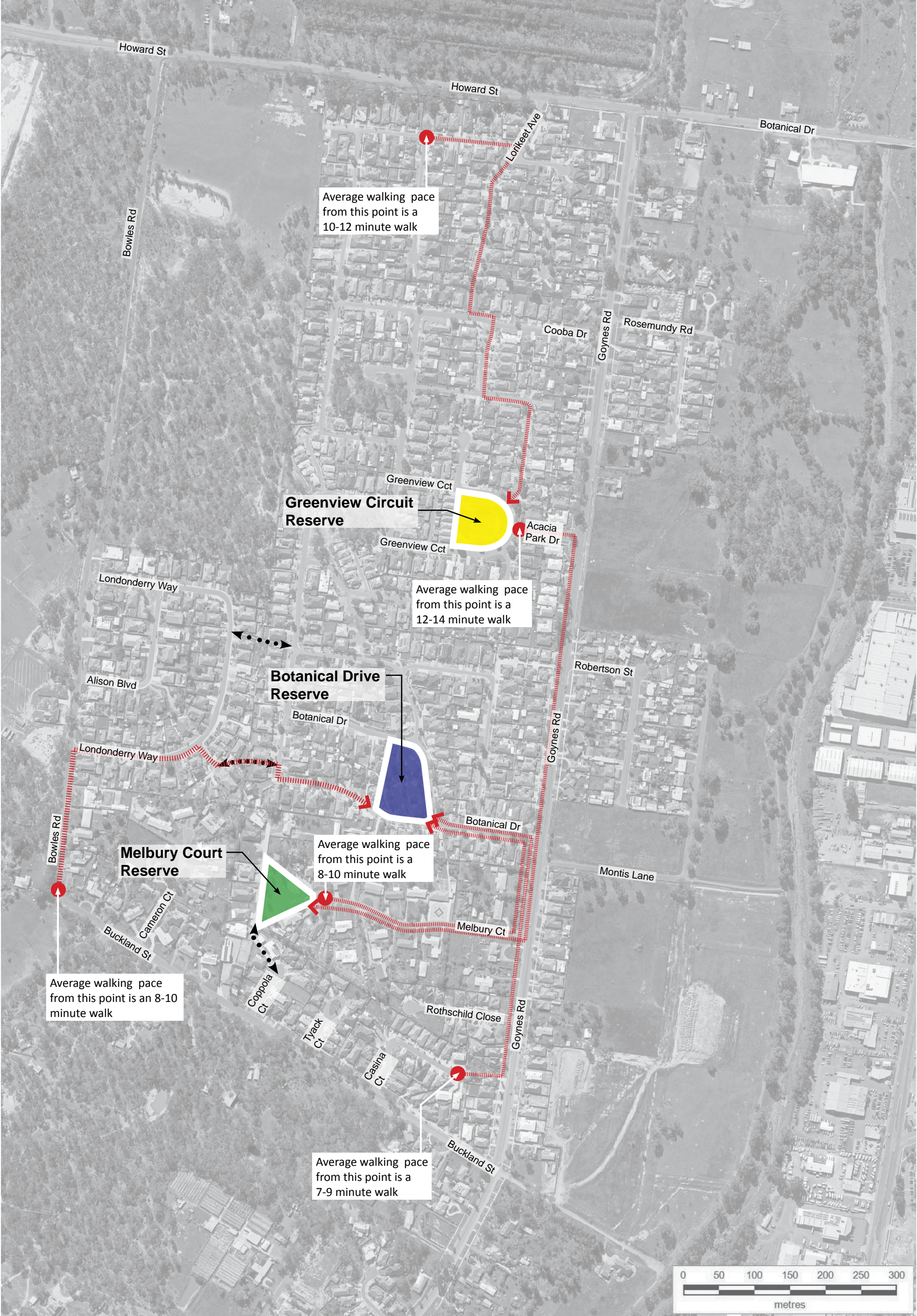
1 Basketball, soccer & netball practice pad







ATTACHMENT 4 – EPSOM PLAY SPACE WALKING TIMES



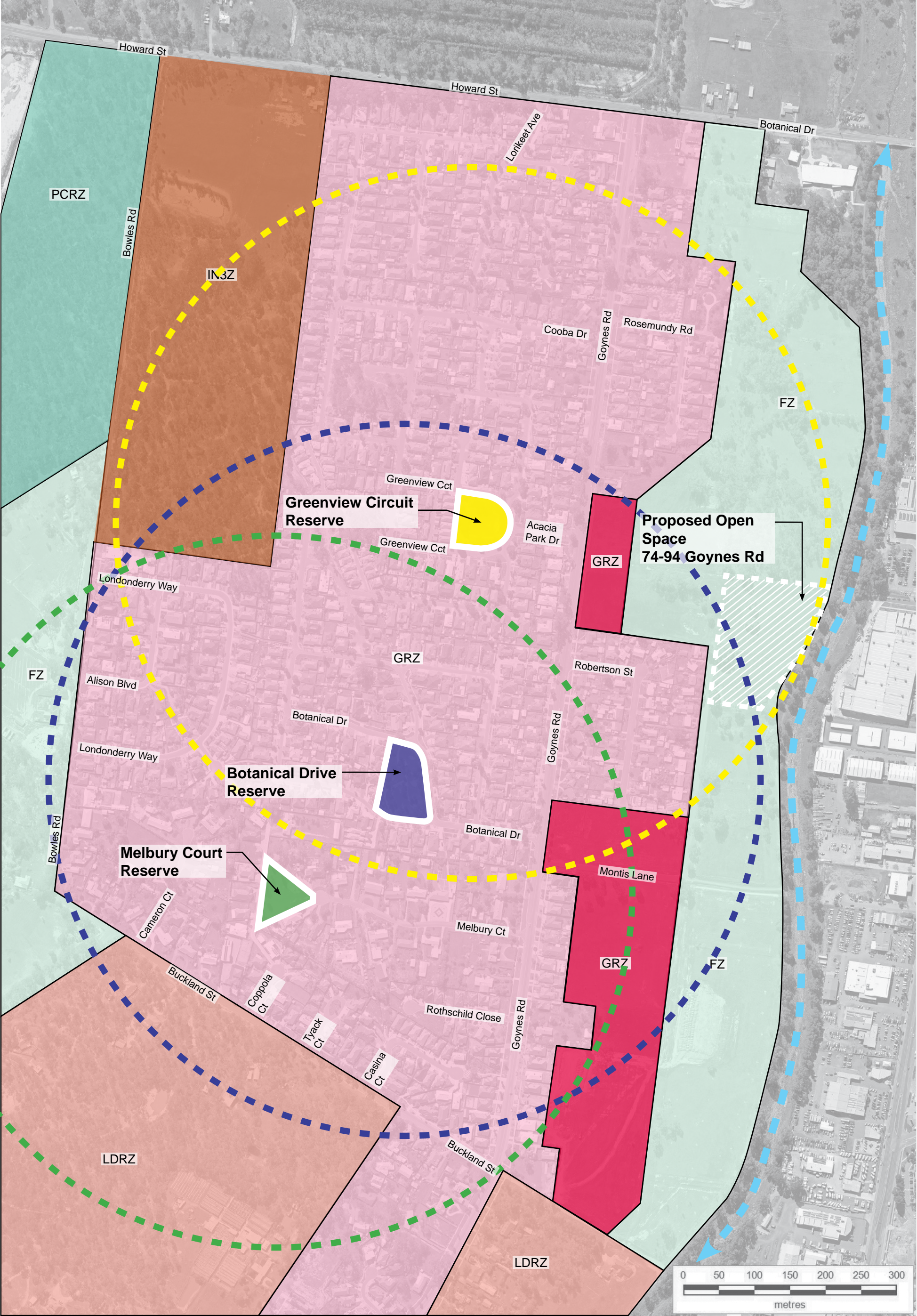
KEY:

- Greenview Circuit Reserve
- Botanical Drive Reserve
- Melbury Court Reserve
- Walking distance time average
- Pedestrian access points





ATTACHMENT 5 – EPSOM PLANNING ZONES



KEY:

General Residential Zone (GRZ)	Industrial 3 Zone (IN3Z)	Greenview Circuit Reserve	Bendigo Creek
Low Density Residential zone (LDRZ)	Public Conservation & Resource Zone (PCRZ)	Botanical Drive Reserve	Proposed Open Space
Farming Zone (FZ)	General Residential Zone (GRZ). Development yet to occur	Melbury Court Reserve	