

GREENING GREATER BENDIGO

Year 3 report

The City's Urban Forest Strategy Greening Greater Bendigo is now in its 4th year of implementation. After 3 full years, the program has continued to yield positive urban forest and public space greening outcomes.

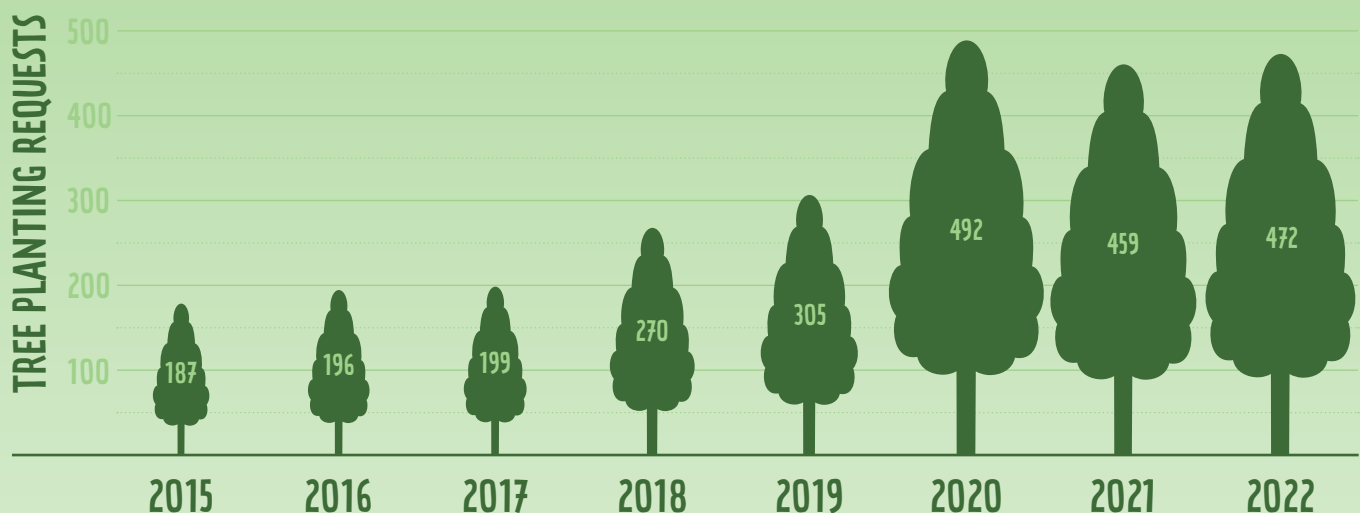
Tree planting

In 2021, it was decided that the City would fast track its goal of planting over 3,000 advanced trees each year as part of the planting program. With 2022 being the first year attempting this number, it is fantastic to report that it was successfully achieved and a further 3,000 trees have been planned for the following year as well.

Customer requests for street trees

There has been an average of 479 tree planting requests from the community since Greening Greater Bendigo's inception. This is an increase of 239 requests on average per year since 2020 (+99%).

Planting Year	Total Trees Planted	Establishment Rate
2017	1,160	73.5%
2018	1,055	76.4%
2019	1,161	82.4%
2020	1,725	82.1%
2021	2,532	85.19%
2022	3,102	TBD
2023	Total trees programmed = 3,021	



Wolstencroft Reserve

The completion of the Wolstencroft Reserve development involved building a new adventure play focused playspace, which included over 120 planted advanced trees to compliment the project and to provide shade and amenity. A fantastic mix of indigenous, native, and exotic trees were utilised.



2022 Planting Program

2022 Priority Streets

These streets were identified as priority streets for planting in 2022. These were labelled as priority streets due to their requirement for additional canopy cover and shade.

Ascot

- Arrawalli Avenue
- Creekview Place
- Triplett Avenue

Bendigo

- Bobs Street
- Creek Street North

California Gully

- Turner Street
- Upper California Gully Road
- Vinton Street

Eaglehawk

- Abbey Close
- Chapple Street
- Hill Street
- Jobs Gully Road
- Kirkwood Road
- Market Street
- Seymoure Street
- Simpsons Road
- Symbester Crescent

East Bendigo

- Harpin Street

Elmore

- Childers Street
- Hervey Street
- Jeffrey Street
- Simmie Street
- Swindale Street

Epsom

- Botanical Drive
- Crossley Avenue
- Mulga Avenue
- Walter Monti Court

Flora Hill

- Hammer Street
- Sayer Street

Golden Square

- Banool Street
- Delbridge Street
- Lily Street
- Magazine Boulevard
- Maple Street
- Pallett Street
- Wade Street
- Wilmott Street

Heathcote

- Camp Street
- Herriott Street Dog Park
- McIvor Street
- McMahon Street
- Redleaf Close

Huntly

- Caviar Court

Junortoun

- Aberdeen Drive
- Duncan Court
- McIvor Forest Drive
- Stirling Avenue

Kangaroo Flat

- Ashbourne Way
- Eldridge Court
- Graham Street
- McInnes Street
- Muir Street
- Neil Street

Kennington

- Bren Street
- Button Street
- Glencoe Street
- Yallambee Drive

Long Gully

- Dean Street
- Dyason Court
- Energetic Street
- Jason Street
- Ore Street
- Stope Court

Maiden Gully

- Glenelg Drive

North Bendigo

- Forbes Court
- Jacob Street

Quarry Hill

- Amer Street
- Gladstone Street

Sailors Gully

- Sailors Gully Road
- Wilson Street

Strathdale

- Elstead Drive
- Louisa Court
- Pilcher Street
- Strathdale Crescent

Strathfieldsaye

- Alfred Way
- Bassett Drive
- Clydebank Court
- Elsworth Drive
- Gordon Court
- Hanover Place
- Henry Court
- Lemnos Court
- Lewana Way
- Warne Court

White Hills

- Gem Court
- O'Keefe Street
- O'Dwyer Street
- Priest Street
- Raglan Street

Tree Cities of the World

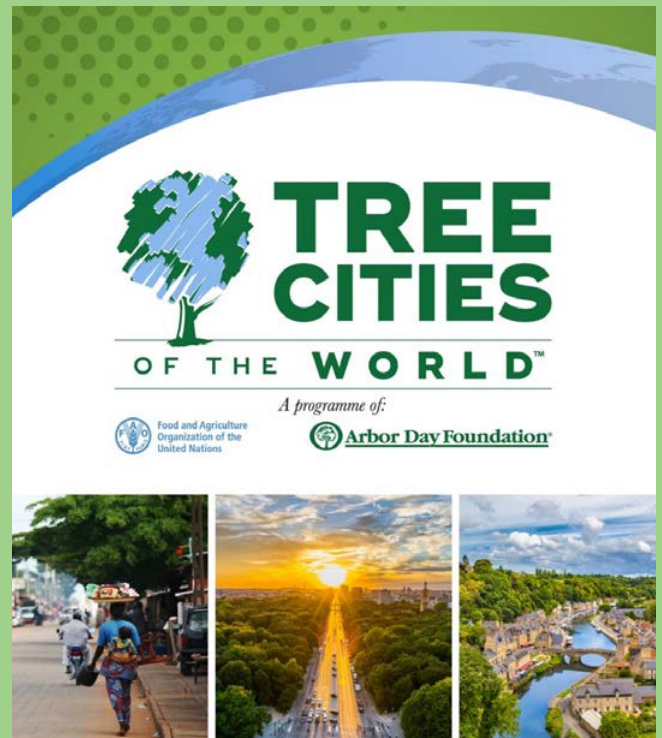
On International Day of Forests (March 23), the Arbor Day Foundation and the Food and Agriculture Organization of the United Nations recognised the City of Greater Bendigo as one of 2022's Tree Cities of the World.

The recognition places Bendigo among 168 other cities from 21 countries around the world as part of an important global network leading the charge in urban forestry.

The Tree Cities of the World programme aims to create more green spaces in urban areas by recognising the cities that do it well.

To gain recognition as a Tree City of the World, the City had to demonstrate its commitment by meeting five programme standards involving the management, resourcing, education and celebration of trees and forests.

Learn more about how the international effort of the Tree Cities of the World programme is committed to ensuring that urban forests and trees are properly maintained, sustainably managed, and duly celebrated here at the Tree Cities of the World website www.treecitiesoftheworld.org



The City's nursery

The City's internal nursery was busy putting thousands of native trees into production from seed, as well as bare-root exotic trees into advanced container sizing. These will all be planted as part of the City's on-going urban tree planting program across multiple years. The nursery again increased the amount of internally grown trees for use in the program, with the goal to reach 1,500 supplied trees each year only just around the corner.

Internal planting and maintenance team

The City's internal planting and maintenance team has continued to work as a well-oiled tree planting machine. Despite an additional workload increase to over 3,000 trees planted and maintained each year, the team has also seen an increase in the successful establishment of trees, with over 85% of the 2021 planted trees passing the internal audit. The team averaged around 25 trees planted a day over the 2022 season, with a huge 681 trees planted in the month of August alone. That's an average of 29 trees per day!

Tree species

2022's tree planting program included 98 unique species across its 3,102 planted trees, 65% of which were native (including 17% indigenous species), and 35% exotic.

Each year, an increase in species diversity is targeted. This will provide opportunities to trial different species and assess their performance in Bendigo's climate.

A photograph of a children's playground. In the foreground, a girl in a pink shirt and black shorts is jumping over a large rock. Another girl in a colorful shirt is climbing a rock. In the background, other children are playing on a path made of tree stumps. The ground is covered in mulch, and there are several young trees planted in the area. The sky is blue with some clouds.

Lake Weeroona Playspace

The new Lake Weeroona playspace (pictured) was completed and opened in late 2022. The playspace incorporated beautiful existing trees like the Peppercorn and the Yellow Box into the design. The project also saw the installation of 17 new advanced trees. Included in the planting are golden elms, Chinese elms and a mini sheoak forest.

Shading pathways and movement

Efforts have been continued to shade important movement corridors and provide cover from the heat to travelling pedestrians and cyclists. Some examples of where the City has planted new trees to aid in cooling includes entry to the Long Gully Splash Park, around Lake Weeroona and through the Heathcote Skate and BMX Park.

Nature Strip Policy and Guidelines

The City adopted a new Nature Strip Policy and Guidelines that aim to increase urban greening through promotion of native grasses and shrubs on nature strips. An increase in green treatments on nature strips can aid in achieving biodiversity outcomes, provide urban cooling and enhance the aesthetics of an area.

NATURE STRIP

Guidelines

