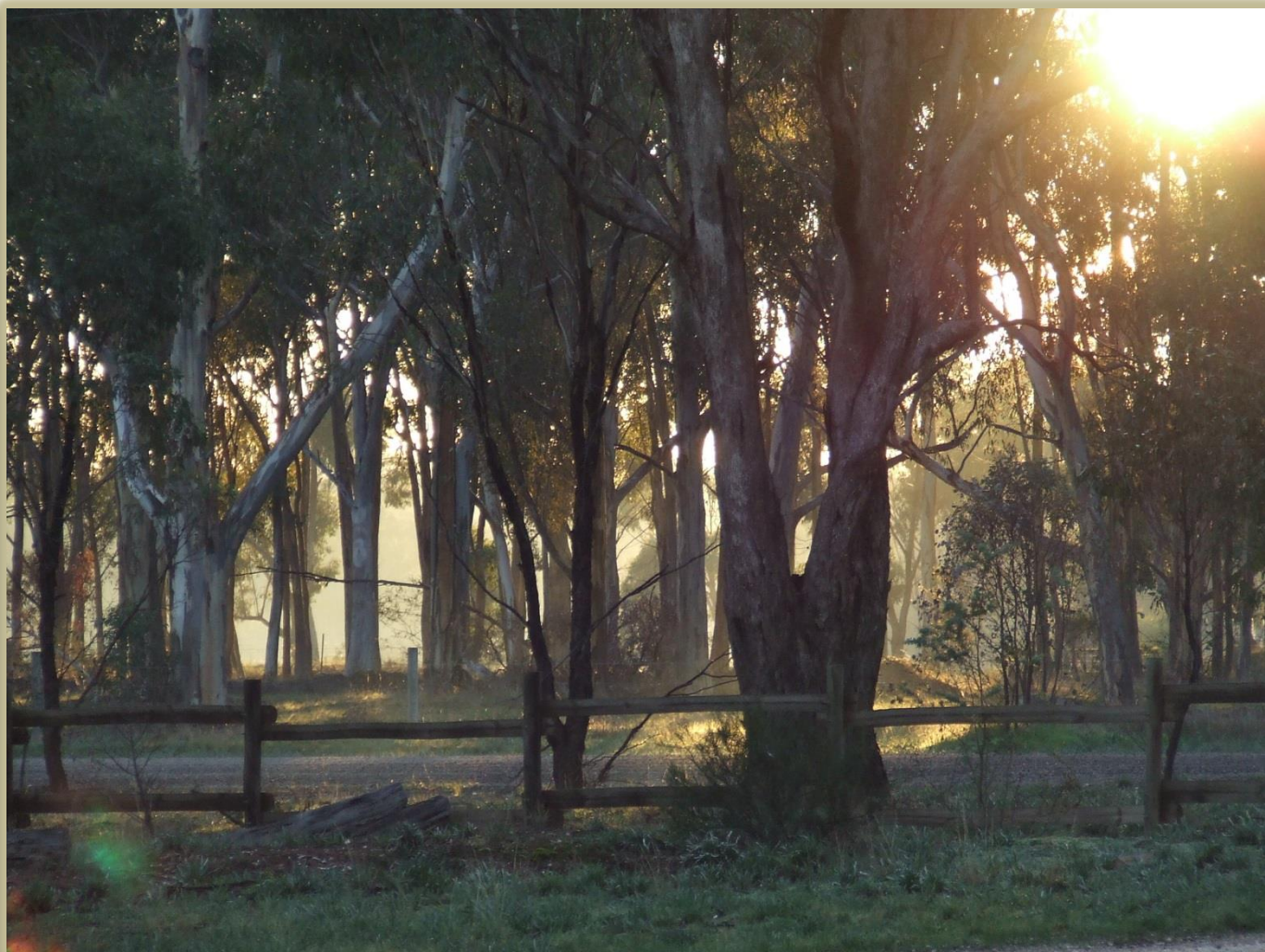


Neilborough & District



Community Plan

Updated 2015



Introduction and Welcome

Background of the Community Plan

The first Neilborough Community Plan was produced in 2008 following the implementation of the “Greater Bendigo +25 Community Plan” by the City of Greater Bendigo in 2005. Smaller townships were assisted to develop their own unique plan through community consultation and participation.

Inherent in the local community planning process is a regular review.

Recently a community survey was conducted and the Neilborough Progress Association members have analysed the results and they are presented in the three goals in this revised plan. Community plans provide a means of expressing the unique characteristics and priorities of a community. Plans are an important document of advice to others about what is important to the local people.

Even when a new plan is completed the work is on-going. Working together into the future will be the key to achieving what we want for Neilborough.

In the plan, each of the goal areas has a number of practical actions that have been put forward by the community. You are encouraged to join a group and bring one of these actions to fruition.



Photo acknowledgement: Figure 1 & 2 were taken by local resident Sarah Rowan

Neilborough & District Community Plan

2015

Community Connection and Welcome

Our Goal

To provide a range of opportunities for people to get to know and connect with others, especially Neilborough residents, in relaxed social settings, that make new and long-term residents feel welcome and safe.

Proposed Actions

1. Publicise opportunities for local connection and information sharing.
2. Work together to offer a small number of community-wide social events each year that have wide appeal and minimum cost. Include all local groups in planning for community events.
3. Improve communication through local newspapers and via the internet. Collate, maintain and publicise a calendar of local events. Establish and maintain a community noticeboard. Establish regular email updates.
4. Advocate to relevant authorities to provide or enable access to services, facilities and support for children, youth and families in the area
5. Continue advocacy for equitable access to high-speed internet and better mobile phone reception for safety, personal and business reasons.
6. Raise community awareness of the value of local events, history and tourism opportunities.

Timeframes

Ongoing

Each year

Ongoing

Ongoing

Ongoing

Ongoing

Measures of Success

Wider local awareness of and participation in local community events.

Better access to digital technologies.

Neilborough & District Community Plan

2015

Community Sustainability

Our Goal

To ensure people in Neilborough and districts continue to have access to the facilities and resources essential to ongoing and functioning and to fulfil their future potential.

Proposed Actions

Timeframes

1. Advocate for access to a water standpipe to ensure a secure water supply
2. Advocate, where necessary, and work in local partnerships, to ensure community meeting places are well maintained and suitably equipped.
3. Advocate for upgrades and regular maintenance of local access roads.
4. Advocate to improve access to public transport for Neilborough and district residents.
5. Conduct deliberate activities to encourage Neilborough and District community members of all ages to volunteer to assist, organise and participate in local community events, activities and improvements.
6. Advocate for equitable access to health, education and support services, including district nursing services, and learning opportunities.

Ongoing

Ongoing

Ongoing

Ongoing

Ongoing

Ongoing

Measures of Success

More people know about and take part in Neilborough and District community activities.
Facilities that are widely used by community members are accessible and well maintained.
Improved access to out-reach health services and public transport.
Regular maintenance of community facilities and roads.

Neilborough & District Community Plan

2015

Environment

Our Goal

The many natural assets of Neilborough and surrounding districts and values, protected, and where relevant, developed for wider use, while maintaining their integrity for future generations.

Proposed Actions

1. Increase community awareness and action to protect and preserve the natural environment including the diversity of native flora and fauna.
2. Increase local cycling and walking tracks.
3. Work with relevant organisations to keep the landscape clean, environmentally sound and aesthetically pleasing.
4. Develop and display an updated map of the local area that includes recreational and historical sites for residents and tourists.
5. Investigate the possibility of creating a website detailing a map of the area and listing landmarks, places of interest, bushwalking and cycling tracks.
6. Value and celebrate Neilborough's history

Timeframes

Ongoing

Ongoing

Yearly planning

Ongoing

Yearly planning

Yearly planning

Key Milestone

Celebrate the natural assets and history of Neilborough and District.

Measures of Success

A yearly priority planning session will facilitate mutual goal-setting.

Elysian Flat History of Neilborough

The greatest rush in the Whipstick was to Elysian Flat in November 1857. It was rich nugget country and from 1858 - 1904, 21 nuggets ranging from 22 - 240 ozs. were recovered. 16 of these were found during 1858, the boom year for Elysian Flat 1857 – 1858.

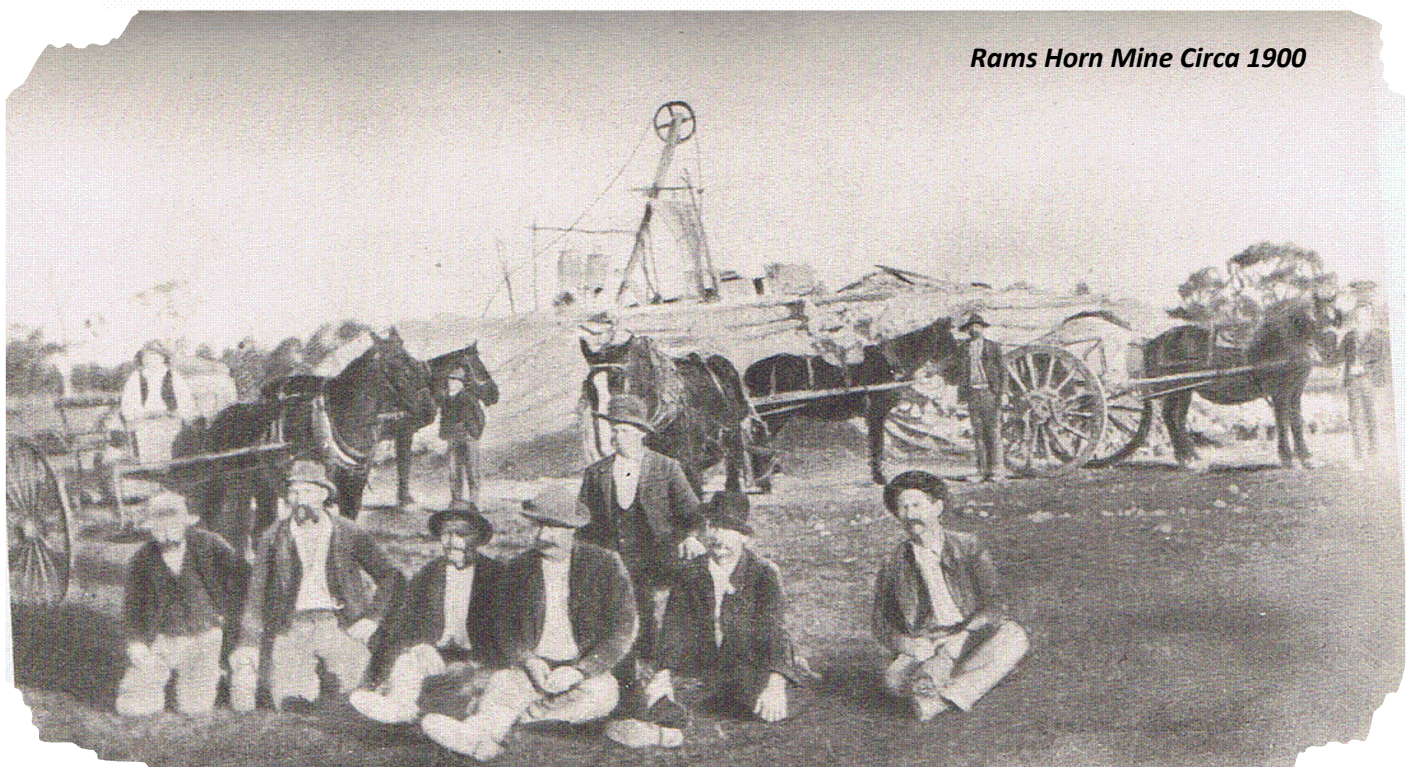
The greatest drawback of mining in the Whipstick was the continual shortage of water. By May 1858 there were 5,585 diggers working in the Whipstick. The bulk of these were at Elysian Flat, but soon after, the lead was lost and not rediscovered until 1862.

The lead on the flat when first commenced was 20 – 40 feet. As the lead traced in a North Westerly direction sinking increased, reaching depths of 100 – 120 feet.

Down on the flat some 50 – 60 stores set up and formed a street of 120 yards long. The first hotel opened in January 1858, the first school opened on 26th April, 1858. The Whipstick & Elysian Flat Water Co. started in June 1858 and contracted McNair and Co. to sink a shaft which produced water very slowly at $\frac{1}{4}$ pint per minute.

By the close of 1858 the Elysian Flat rush was past its peak with the population considerably reduced, and further dwindled over the years. During August 1858 a survey was commenced for the site of the township of Elysian Flat. The town site was gazetted the township of Neilborough on 3rd August, 1860. In 1865 Neilborough was included in the formation of Raywood. Then the borough of Raywood eventually amalgamated with the Shire of Marong in 1915.

The last mining on the deep lead was in 1902 when Morshead's shaft reached a depth of 121 feet. This was the deepest shaft on the Elysian Flat alluvial, and Morshead's mine was called Ram's Horn.

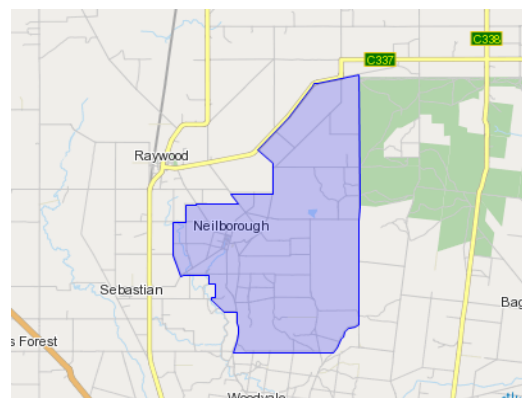


Rams Horn Mine Circa 1900

Neilborough - Snapshot of results from the 2011 Census

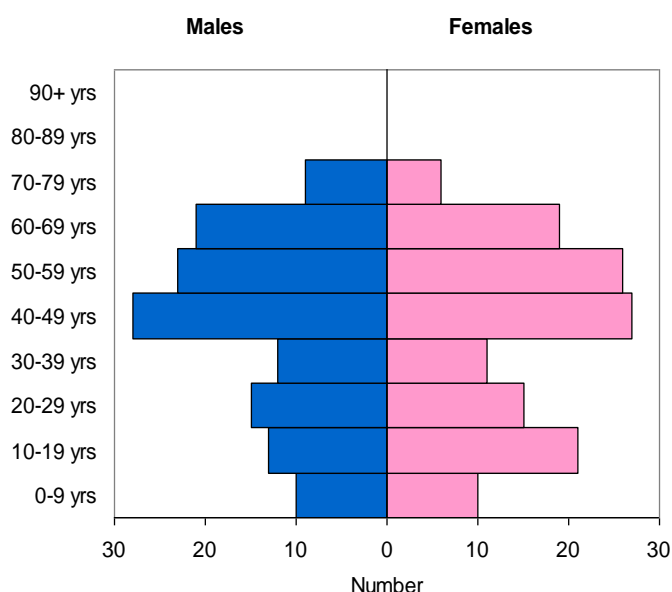
Source: Australian Bureau of Statistics Code SSC21130 (SSC) Web page link: http://www.censusdata.abs.gov.au/census_services/getproduct/census/2011/quickstat/SSC21130?opendocument&navpos=220

At the time of the 2011 Census, there were 265 people in Neilborough. Of these, 48.3% were male and 51.7% were female. There were no people who identified themselves as being of Aboriginal and Torres Strait Islander descent.

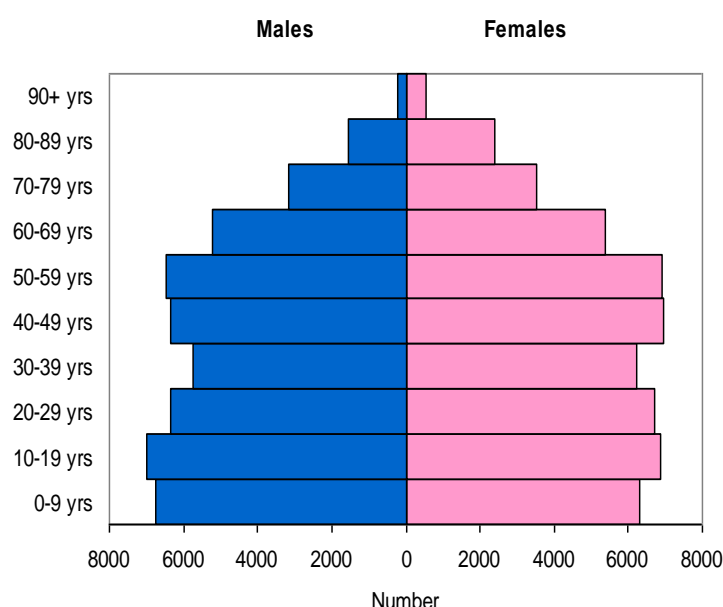


Age

Neilborough



Greater Bendigo



The median age of people in Neilborough is 46 years which is higher compared to the median age for Greater Bendigo which is 38.

The most common ancestries in Neilborough are Australian 34%, English 25.9%, Irish 11.6%, Scottish 11.1% and German 8.1%.

Median Weekly Income

People aged 15 years and over

	Neilborough	Greater Bendigo	Victoria
Personal	\$492	\$513	\$561
Family	\$1,363	\$1,245	\$1,460
Household	\$970	\$991	\$1,216

The personal and household median weekly income for residents in Neilborough is lower compared to Greater Bendigo and Victoria but the family median weekly income was higher compared to Greater

Bendigo but lower compared to Victoria. In Neilborough, 18.3% of households had a gross weekly household income of less than \$600 compared to 28.1% for Greater Bendigo and 3.7% had a gross weekly income of more than \$3,000 compared to 5.1% in Greater Bendigo.

The median weekly rent in Neilborough is \$165 which is slightly under the median weekly rent for Greater Bendigo which is \$200. 96.8% of households renting in Neilborough paid less than 30% of the household income on rent compared to 91.5% in Greater Bendigo. The percentage of households paying more than 30% of income on rent in Neilborough is 3.2% compared to 8.5% in Greater Bendigo.

The median monthly mortgage repayments in Neilborough are \$1,300 which is the same as Greater Bendigo. Households with mortgage repayments less than 30% of household income in Neilborough are 81.6% which is higher compared to Greater Bendigo with 92.5%. Households with mortgage repayments greater than 30% of household income are 18.4% which is considerably higher compared to Greater Bendigo with 7.5%.

Family Composition

	Neilborough (%)	Greater Bendigo (%)	Victoria (%)
Couple family without children	48.7	39.2	36.7
Couple family with children	39.7	41.0	46.0
One parent family	11.5	18.3	15.5
Other family	0.0	1.5	1.8

In Neilborough there are more couple family without children compared to couple family with children and one parent families. Compared to Greater Bendigo and Victoria, Neilborough had more couple family without children.

In Neilborough, 81.2% were family households (family households refer to a household with at least one child under the age of 15 years), compared to 68.8% in Greater Bendigo. The proportion of single or lone person households in Neilborough is lower compared to Greater Bendigo with 18.8% and 24.5% respectively.

Dwellings

	Neilborough (%)	Greater Bendigo (%)	Victoria (%)
Occupied Dwellings	85.0	90.7	88.7
Unoccupied Dwellings	15.0	9.3	11.3

Of the total of private dwellings in Neilborough, 85% were occupied. This rate of occupancy is lower compared to Greater Bendigo and Victoria. The average number of bedrooms per dwelling in Neilborough is 3.3 and the average number of people per household is 2.6.