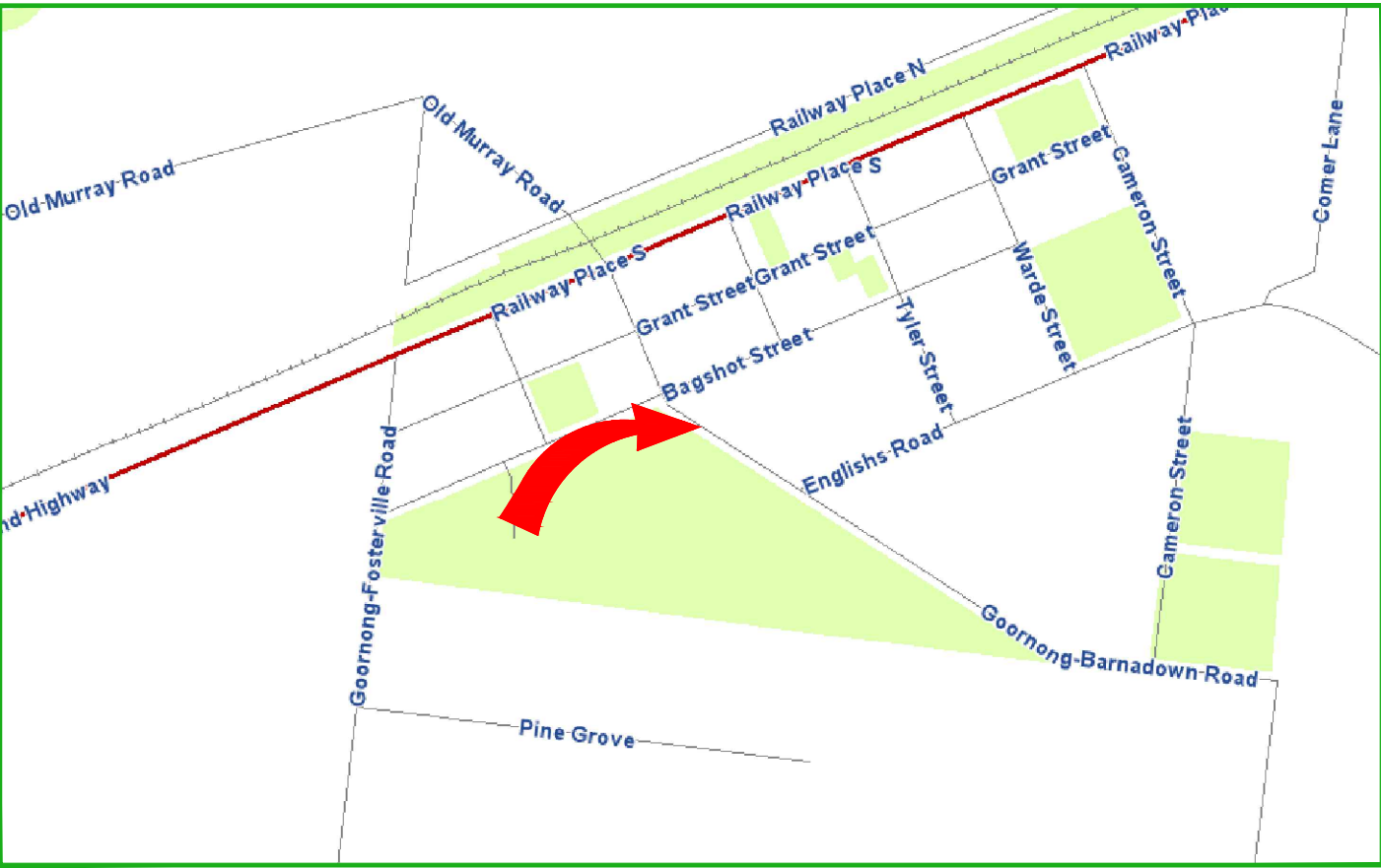
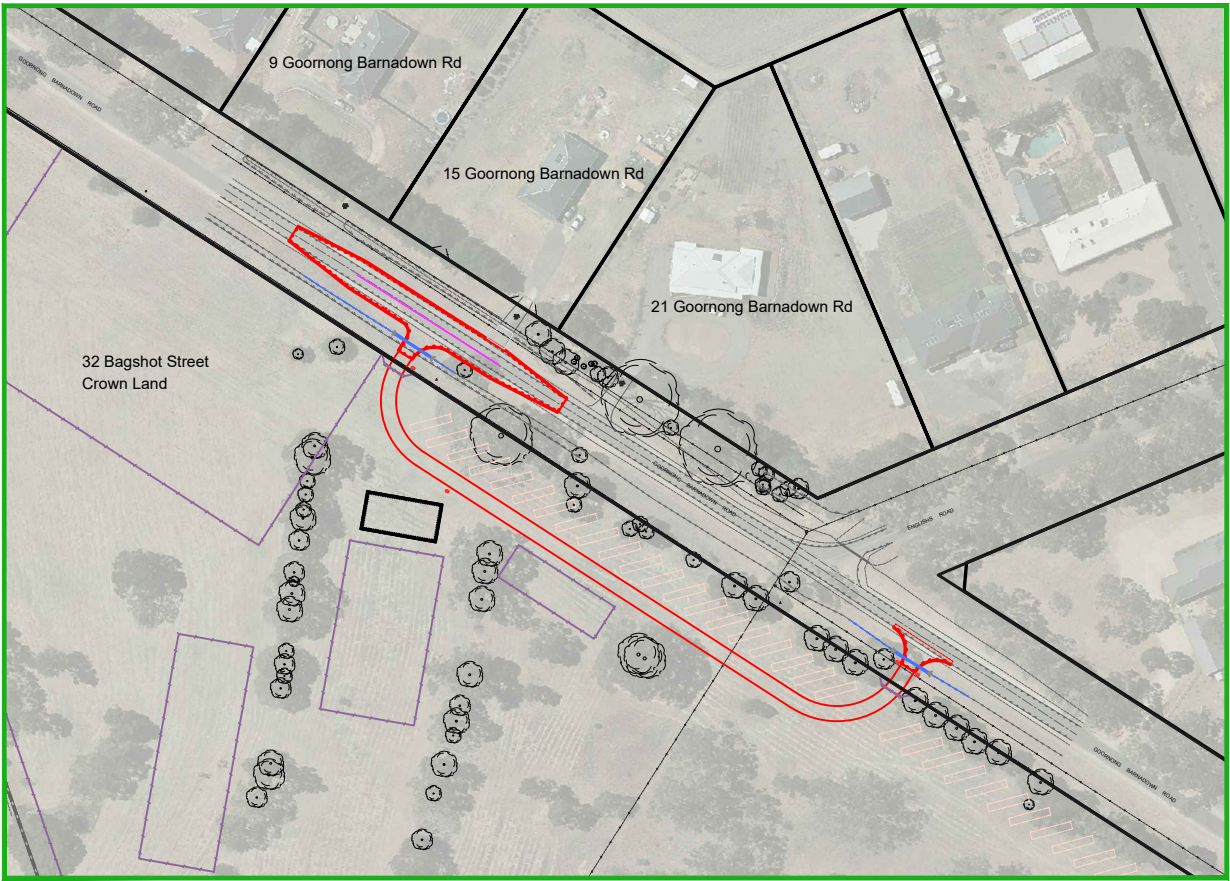


OCTOBER 2023


| DOCUMENT CONTROL | | | | |
|------------------|---------------------|------------|----------|--------------|
| SHEET No. | SHEETD ESC. | 10/10/2023 | xx/xx/xx | xx/xx/xx |
| | | DRAFT | TENDER | CONSTRUCTION |
| | | REVISION | REVISION | REVISION |
| 1 | COVER SHEET | A | | |
| 2 | GENERAL NOTES | A | | |
| 3 | SITE LAYOUT | A | | |
| 4 | ENTRY DESIGN LAYOUT | A | | |
| 5 | EXIT DESIGN LAYOUT | A | | |
| 5 | DESIGN SECTIONS | A | | |
| 7 | INTERNAL DWY DETAIL | A | | |
| 8 | SETOUT | A | | |



LOCALITY MAP



PROJECT EXTENTS

| APPROVAL TO CONSTRUCT STAMP | | PROJECT PLANNING REQUIREMENTS | | | |  CITY OF GREATER BENDIGO | PROJECT DESIGN STATUS | | | PROJECT DETAILS | | SHEET DETAILS | | | |
|--------------------------------|------------|-------------------------------|-------------|------------|-----------------------------------|---|-----------------------|-----------------------------------|------------------------------|-----------------|--|---------------|--|--|--|
| DO NOT CONSTRUCT WITHOUT STAMP | Item | Required | Comments | Contractor | Surveyor: | | H. Whytock | Aug 23 | Location: Goornong Pony club | COVER SHEET | Sheet number: 1 of 8 | | | | |
| | Vegetation | No | - | | Designer: | | N. Sartori | Sep 23 | | | Plan Scale: - A3 | | | | |
| | RRV | No | - | | Draft Checked: | | A. Smith | Sep 23 | | | Plotted: 10/10/2023 By: Nathan Sartori | | | | |
| | CMA | No | - | | Tender Approved: | | N. Sartori | Sep 23 | | | SHEET REVISIONS AFTER TENDER | | | | |
| | Revision | Description | Approved by | | Date | | | | | | | | | | |
| | - | - | - | | - | | | | | | | | | | |
| | - | - | - | | - | | | | | | | | | | |
| - | - | - | | - | | | | | | | | | | | |
| | | | | | PRELIMINARY DESIGN DRAFT 1 | | | Suburb: Goornong | | | | | | | |
| | | | | | | | | Works: Pony club entrance and dwy | | | | | | | |
| | | | | | | | | GB No: GB5016 | | | | | | | |

CONSTRUCTION SPECIFICATIONS

All construction undertaken by, or on behalf of, The City of Greater Bendigo (CoGB) shall be undertaken in accordance with all DTP/Vicroads 200-700 series of Standard Specifications.

Compliance with the specifications to the satisfaction of the project Superintendent is required before a project can meet Practical Completion.

Sections of the DTP/Vicroads 200-700 series of standard specifications which are of particular relevance for this project include:

FORMATION

201 Site Clearing
204 Earthworks

FLEXIBLE PAVEMENTS

304 Unbound Flexible Pavement Construction
307 In Situ Stabilisation of Pavements with Cementitious Binders
310 Preparation of Granular Pavements for Bituminous Surfacing

ASPHALT AND SURFACE TREATMENTS

408 Sprayed Bituminous Surfacings

INCIDENTAL CONSTRUCTION

701 Underground Stormwater Drains
702 Subsurface Drainage
705 Drainage Pits and Covers
706 Installation or Replacement of Utility Infrastructure within Road Reserves
707 Fencing
709 Guide Posts
714 Sign Installation
721 Pavement Markings

MATERIAL SPECIFICATIONS

FOR WORKS DEPARTMENT

All materials used in construction projects undertaken by the CoGB Works department shall be compliant with the specifications setout in the relevant CoGB material panel supply contract.

Where panel supply contract information is not available, material specifications shall be sought from and supplied by the CoGB Engineering Department, and all materials used in construction must comply with those specifications.

FOR EXTERNAL CONSULTANTS (inc. consultants engaged by the Works Dept.)

All materials used by external contractors engaged to undertake CoGB construction projects, or components thereof, shall be as per the material specification supplied within the instrument of engagement (Quote, Tender or Contract), or as per written instruction from the project Superintendents.

PROJECT PLANNING REQUIREMENTS

Permits and approvals

- Project permits and approvals which were required to be obtained prior to construction are listed in the below table
- Construction activities must be compliant with all conditions within the listed permits and approvals.

| PROJECT PLANNING REQUIREMENTS | | | |
|-------------------------------|----------|----------|------------|
| Item | Required | Comments | Contractor |
| Vegetation | No | - | |
| RRV | No | - | |
| CMA | No | - | |
| Planning Permit | No | - | |
| Land Acquisition | No | - | |
| CHMP | No | - | |
| Other | No | - | |

GENERAL NOTES

STANDARD DRAWINGS

Standard Drawings that are referenced within the design drawings are noted as 'SD', and are sourced from 3 locations. They are available for download online or from the project superintendent:

- 'CoGB SD' are sourced from the City of Greater Bendigo
<https://www.bendigo.vic.gov.au/Services/Roads-and-Drainage/Roads/Construction-standards>
- 'IDM SD' are sourced from the Infrastructure Design Manual
<https://www.designmanual.com.au/>
- 'Vicroads SD' are sourced from Vicroads
<https://www.vicroads.vic.gov.au/business-and-industry/technical-publications/technical-drawings-for-roadworks/standard-drawings-for-roadworks>

SERVICES SHOWN ON PLANS AND DURING CONSTRUCTION

- The location of underground services shown on design drawings have been derived from available information. Accuracy can not be guaranteed and should therefore be treated as indicative only.
- Gas and water property services are not located or shown on design drawings. It is the contractors responsibility to locate and alter these services as required to achieve the project design.
- Prior to undertaking construction activities, exact service locations must be arranged and marked onsite.
- The contractor will be held responsible for any damage caused to services.
- All service pit lids or valve covers within the works area are to be raised or lowered to match the design surface level to the relevant authority standards, unless noted otherwise on the construction plans, or by approval from the superintendent.
- Any service authority marker post found within the works area is to be relocated adjacent to their current position to a point 150mm offset from the nearest property boundary.
- Any PSM covers affected during works are to be renewed to CoGB SD293 unless noted otherwise, or by approval from the superintendent.

DRAINAGE

- Any private storm water pipes discovered during works are to be plumbed to the nearest CoGB drainage pit, or with approval from the superintendent, to the nearest kerb or pipe

CONSTRUCTION MANAGEMENT GUIDANCE

OCCUPATIONAL HEALTH AND SAFETY

Delivery units shall consider appropriate management of occupational health and safety, and develop management plans compliant with ISO45001, and the City of Greater Bendigo integrated management system prior to any works beginning onsite

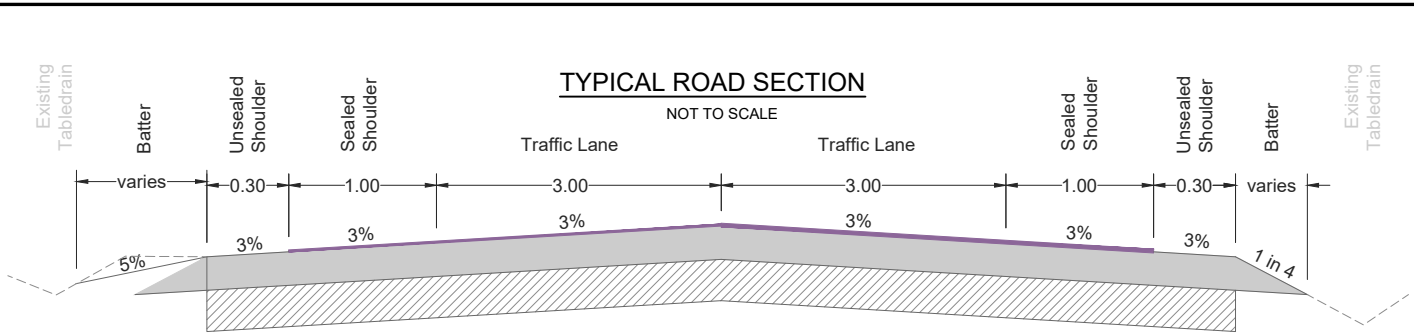
SITE ENVIRONMENTAL MANAGEMENT PLAN

A Site Environmental Management Plan (SEMP) is to be developed by delivery units to manage the project site during the project delivery window. Consideration shall be given to appropriate management of the following, with a SEMP plan filled out and displayed onsite at all times:

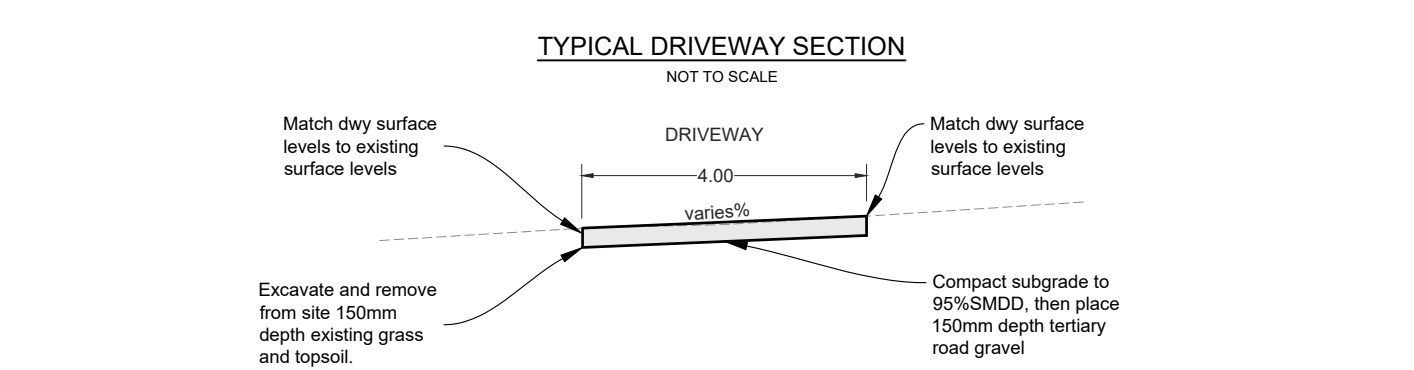
- Communication and induction for staff, contractors and sub contractors
- Communication with appropriate adjacent residents/businesses
- Noise and Vibration
- Dust and contamination
- Chemicals
- Erosion and sediment
- Waste
- Vehicle and roadside management
- Vegetation, with particular focus on any relevant permit conditions and AS4970
- Heritage, with particular focus on any relevant permit conditions

TRAFFIC MANAGEMENT PLAN

Where appropriate and prior to any works starting on site, delivery units must organise a AS1742.3 compliant traffic management plan, and have it approved by the relevant road authority.



| ROAD PAVEMENT TABLE | | | |
|---------------------|---------------|-------|--|
| KEY | LAYER | DEPTH | THICKNESS |
| | Spray seal | 14mm | 14mm/7mm Double/Double C320 primerseal |
| | Base | 150mm | CL1 FCR 20mm compact to 100%MMDD at 85%OMC +-1% |
| | Stabilisation | 250mm | Mill/blend existing seal and granular materials Insitu stabilisation using 30/40/30 Lime / GB cement / Slag (Confirm stab mix with stab consultant onsite prior to works to ensure a mn CBR of 10 will be achieved) Compact to 75% Density index +-3% |
| | Subgrade | | Inferred fill and residual soils (CBR>4%) |



| DWY PAVEMENT TABLE | | | |
|--------------------|----------|-------|---|
| KEY | LAYER | DEPTH | THICKNESS |
| | Base | 150mm | Tertiary road gravel cmpct to 100%MMDD at 85%OMC +-1% |
| | Subgrade | | Compact residual soils to 95%SMDD (assumed CBR>4%) |

IMPORTANT!

The location of underground services have been derived from available information, however accuracy cannot be guaranteed. All existing service information should therefore be treated as indicative only, and service locations must be arranged prior to commencement of any excavation. The contractor will be held responsible for any damage caused to underground services.

| TRAFFIC COUNT DATA | | | | |
|--------------------|----------------|----------|----------------|----------|
| LOCATION | EXT. 2 WAY VPD | EXT. CV% | DES. 2 WAY VPD | DES. CV% |
| Goornong Barna Rd | 219 (2019) | 8 | 350 | 8 |

SURVEY NOTES

Survey has been conducted to:

- MGA 2020 and orientated via GPS localisation
- Coordinates have been centered over STN 902
- Survey level has been tied to AHD via GPS



PROJECT DESIGN STATUS

| | | |
|------------------|------------|--------|
| Surveyor: | H. Whytock | Aug 23 |
| Designer: | N. Sartori | Sep 23 |
| Draft Checked: | A. Smith | Sep 23 |
| Tender Approved: | N. Sartori | Sep 23 |

PRELIMINARY DESIGN DRAFT 1

PROJECT DETAILS

Location: Goornong Pony club

Suburb: Goornong

Works: Pony club entrance and dwy

GB No: GB5016

SHEET DETAILS

Sheet number: 2 of 8

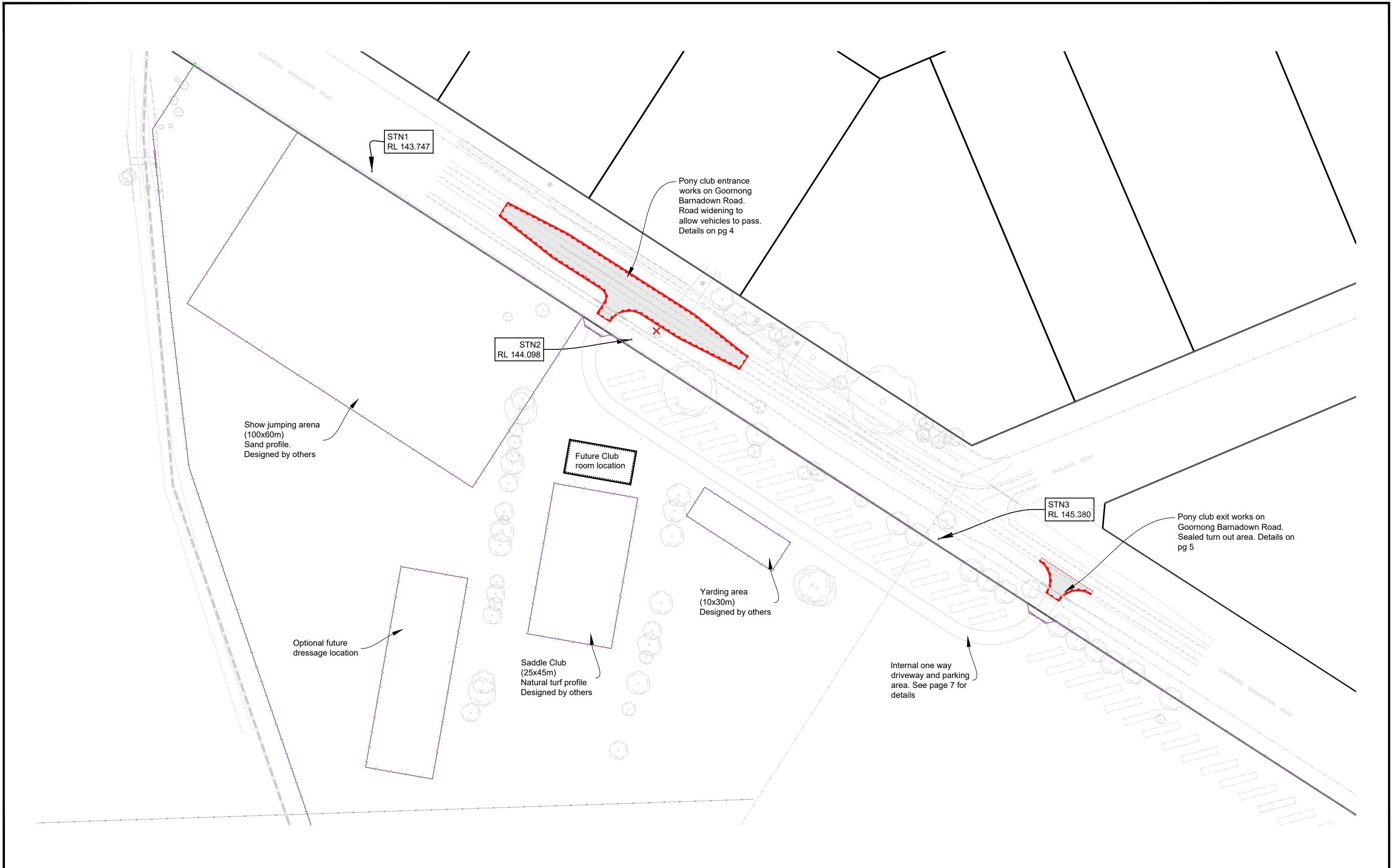
Plan Scale: - A3








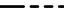






Plotted: 10/10/2023 By: Nathan Sartori

GENERAL NOTES

SHEET REVISIONS AFTER TENDER

| Revision | Description | Approved by | Date |
|----------|-------------|-------------|------|
| - | - | - | - |
| - | - | - | - |
| - | - | - | - |



| LEGEND | | |  CITY OF GREATER BENDIGO | PROJECT DESIGN STATUS | | PROJECT DETAILS | | SHEET DETAILS | |
|---|---|---|---|---------------------------------------|------------|-----------------|-----------|------------------------------|--|
|  DESIGN LINEMARKING |  DESIGN CONTOURS - Levels to AHD (0.10m interval) |  DESIGN SEAL: (Refer: Typical road pavement detail.) | | Surveyor: | H. Whytock | Aug 23 | Location: | Goornong Pony club | Sheet number: 3 of 8 |
|  DESIGN SEAL EDGE |  EXISTING CONTOURS - Levels to AHD (0.10m interval) |  DESIGN UNSEALED SHOULDERS (Refer: Typical road pavement detail.) | | Designer: | N. Sartori | Sep 23 | Suburb: | Goornong | Plan Scale: 1:XXX A3 |
|  DESIGN SHOULDER |  DESIGN FENCE (by others) |  DESIGN EARTHEN BATTER AREAS (Refer: Typical road pavement detail.) | | Draft Checked: | A. Smith | Sep 23 | Works: | Pony club entrance and dwy | Plotted: 10/10/2023 By: Nathan Sartori |
|  DESIGN INVERT | |  DESIGN GRAVEL DRIVEWAY 150mm depth tertiary road gravel | | Tender Approved: | N. Sartori | Sep 23 | GB No: | GB5016 | |
|  DESIGN BATTER | |  DESIGN BEACHING 150mm depth 150Ø Rock beaching | | PRELIMINARY DESIGN DRAFT 1 | | | | SHEET REVISIONS AFTER TENDER | |
|  TREE REMOVALS | | | | | | | | Revision | Description |
| | | | | | | | | Approved by | Date |
| | | | | | | | | - | - |
| | | | | | | | | - | - |
| | | | | | | | | - | - |

Install road guideposts compliant with Vicroads
Spec 709 between:
- CH10 to CH240

SIGN REMOVALS / ALTERATIONS

| NO. | SIGN TYPE | SIGN CODE | ACTION |
|-----|-----------|-----------|--------------------|
| 1 | One Way | R2-17 | Supply and install |



R2-17

Sawcut at construction join. Match new road levels to existing and overlap seal by minimum 500mm

Place and compact 150mm depth tertiary road gravel to reform existing driveway as shown

Install 7.6m length of 300ØRCP CL4 FJ driveway pipe with a driveable endwalls at each end.
Place 2m2 of 150mm rock spill in table drain at endwall lip as shown.
Sealed entrance area humps up over pipe slightly as shown.

Des inv:143.65

Des inv: 143.70

New fence and gates installed by others. Boundary fence to be aligned to true title boundary

LEGEND

DESIGN LINEMARKING
DESIGN SEAL EDGE
DESIGN SHOULDER
DESIGN INVERT
DESIGN BATTER
TREE REMOVALS

DESIGN CONTOURS
- Levels to AHD (0.10m interval)
EXISTING CONTOURS
- Levels to AHD (0.10m interval)
DESIGN FENCE
(by others)

DESIGN SEAL:
(Refer: Typical road pavement detail.)
DESIGN UNSEALED SHOULDERS
(Refer: Typical road pavement detail.)
DESIGN EARTHEN BATTER AREAS
(Refer: Typical road pavement detail.)

DESIGN MULCHED BATTER AREAS
(Refer: Typical road pavement detail.)
DESIGN GRAVEL DRIVEWAY
150mm depth tertiary road gravel
DESIGN BEACHING
150mm depth 150Ø Rock beaching



PROJECT DESIGN STATUS

| | | |
|------------------|------------|--------|
| Surveyor: | H. Whytock | Aug 23 |
| Designer: | N. Sartori | Sep 23 |
| Draft Checked: | A. Smith | Sep 23 |
| Tender Approved: | N. Sartori | Sep 23 |

**PRELIMINARY DESIGN
DRAFT 1**

PROJECT DETAILS

Location: Goornong Pony club
Suburb: Goornong
Works: Pony club entrance and dwy
GB No: GB5016

SHEET DETAILS

ENTRY DESIGN
DETAIL

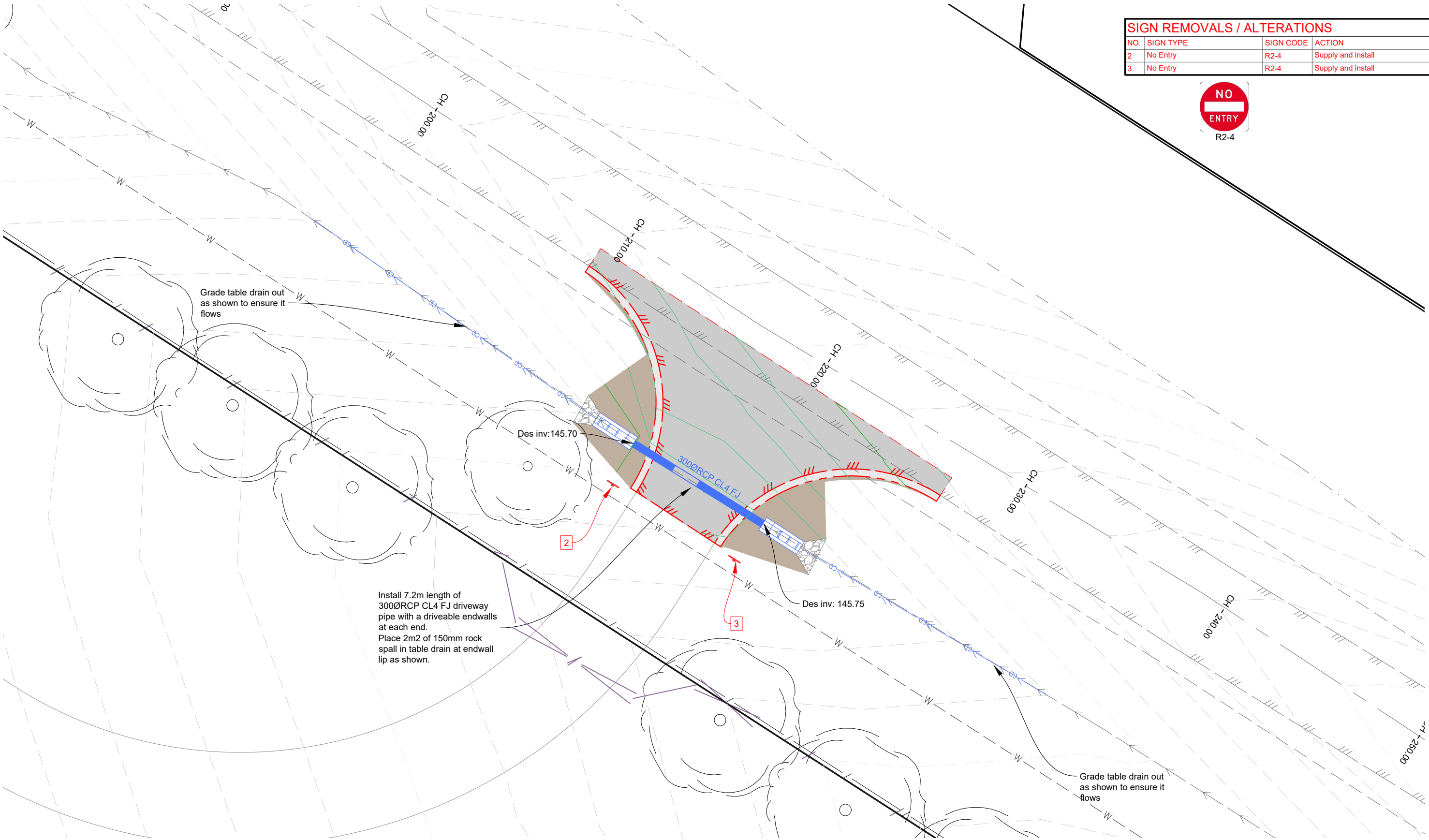
Sheet number: 4 of 8
Plan Scale: 1:250
Plotted: 10/10/2023 By: Nathan Sartori


SHEET REVISIONS AFTER TENDER

| Revision | Description | Approved by | Date |
|----------|-------------|-------------|------|
| - | - | - | - |
| - | - | - | - |
| - | - | - | - |

Install road guideposts compliant with Vicroads
Spec 709 between:
- CH10 to CH240

| SIGN REMOVALS / ALTERATIONS | | | |
|-----------------------------|-----------|-----------|--------------------|
| NO. | SIGN TYPE | SIGN CODE | ACTION |
| 2 | No Entry | R2-4 | Supply and install |
| 3 | No Entry | R2-4 | Supply and install |





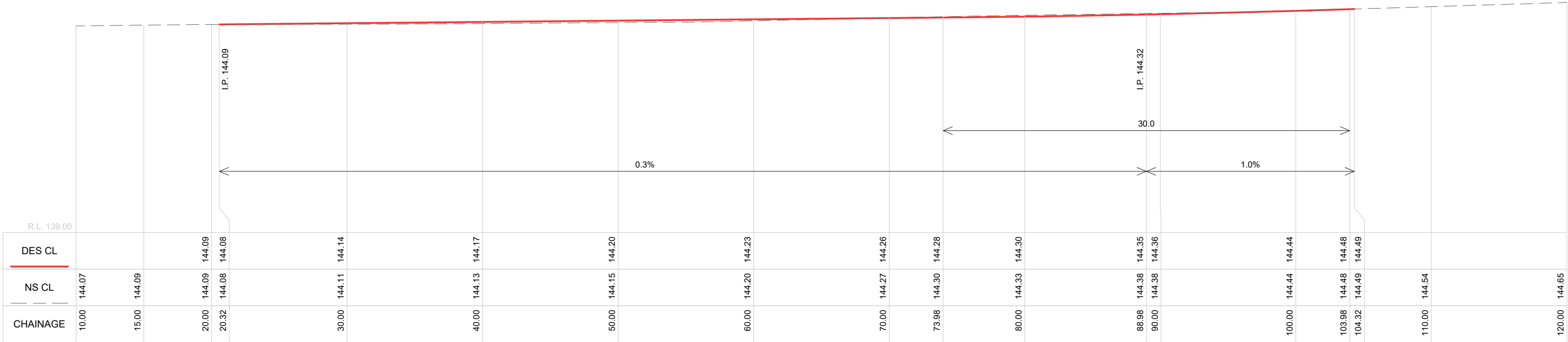
CITY OF GREATER
BENDIGO

| PROJECT DESIGN STATUS | | |
|-----------------------|------------|--------|
| Surveyor: | H. Whytock | Aug 23 |
| Designer: | N. Sartori | Sep 23 |
| Draft Checked: | A. Smith | Sep 23 |
| Tender Approved: | N. Sartori | Sep 23 |

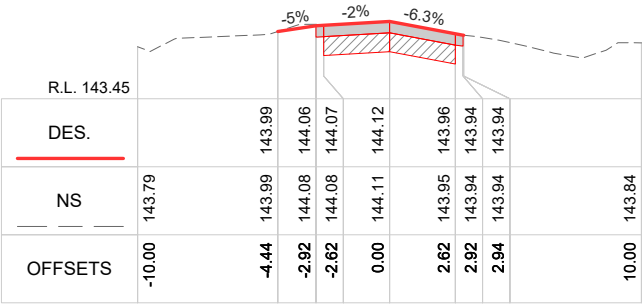
PRELIMINARY DESIGN
DRAFT 1

| PROJECT DETAILS | |
|-----------------|----------------------------|
| Location: | Goornong Pony club |
| Suburb: | Goornong |
| Works: | Pony club entrance and dwy |
| GB No: | GB5016 |

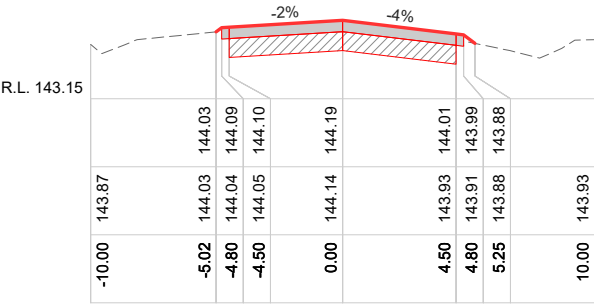
| SHEET DETAILS | | | |
|------------------------------|-------------|--|------|
| EXIT DESIGN LAYOUT | | Sheet number: 5 of 8 | |
| | | Plan Scale: 1:XXX A3 | |
| | | Plotted: 10/10/2023 By: Nathan Sartori | |
| SHEET REVISIONS AFTER TENDER | | | |
| Revision | Description | Approved by | Date |
| - | - | - | - |
| - | - | - | - |
| - | - | - | - |



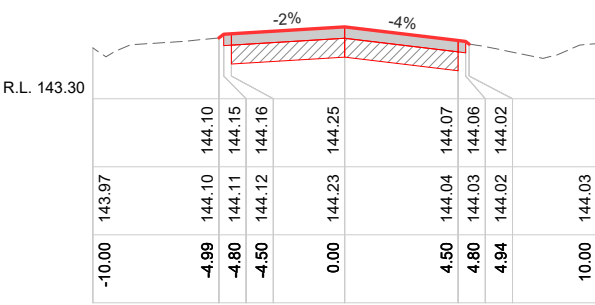
CL LONGITUDINAL SECTION CH 10.000 To 120.000
SCALES: H 1:300 V 1:100 (A3)



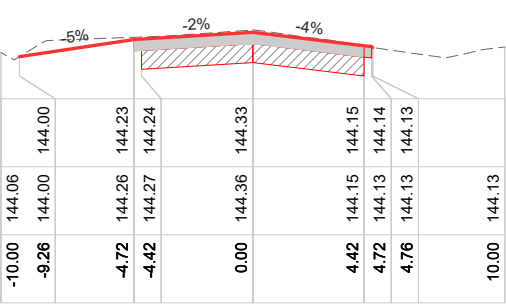
CL CROSS SECTIONS Ch 25.00
SCALES: H 1:300 V 1:100 (A3)



Ch 45.00



Ch 65.00



Ch 85.00

DESIGN LINEMARKING

DESIGN SEAL EDGE

DESIGN SHOULDER

DESIGN INVERT

DESIGN BATTER

TREE REMOVALS

DESIGN CONTOURS
- Levels to AHD (0.10m interval)

EXISTING CONTOURS
- Levels to AHD (0.10m interval)

DESIGN FENCE
(by others)

DESIGN SEAL:
(Refer: Typical road pavement detail.)

DESIGN UNSEALED SHOULDERS
(Refer: Typical road pavement detail.)

DESIGN EARTHEN BATTER AREAS
(Refer: Typical road pavement detail.)

DESIGN MULCHED BATTER AREAS
(Refer: Typical road pavement detail.)

DESIGN GRAVEL DRIVEWAY
150mm depth tertiary road gravel

DESIGN BEACHING
150mm depth 150Ø Rock beaching

CITY OF GREATER
BENDIGO

PROJECT DESIGN STATUS

Surveyor: H. Whytock Aug 23

Designer: N. Sartori Sep 23

Draft Checked: A. Smith Sep 23

Tender Approved: N. Sartori Sep 23

PRELIMINARY DESIGN
DRAFT 1

PROJECT DETAILS

Location: Goornong Pony club

Suburb: Goornong

Works: Pony club entrance and dwy

GB No: GB5016

SHEET DETAILS

DESIGN SECTIONS

Sheet number: 6 of 8

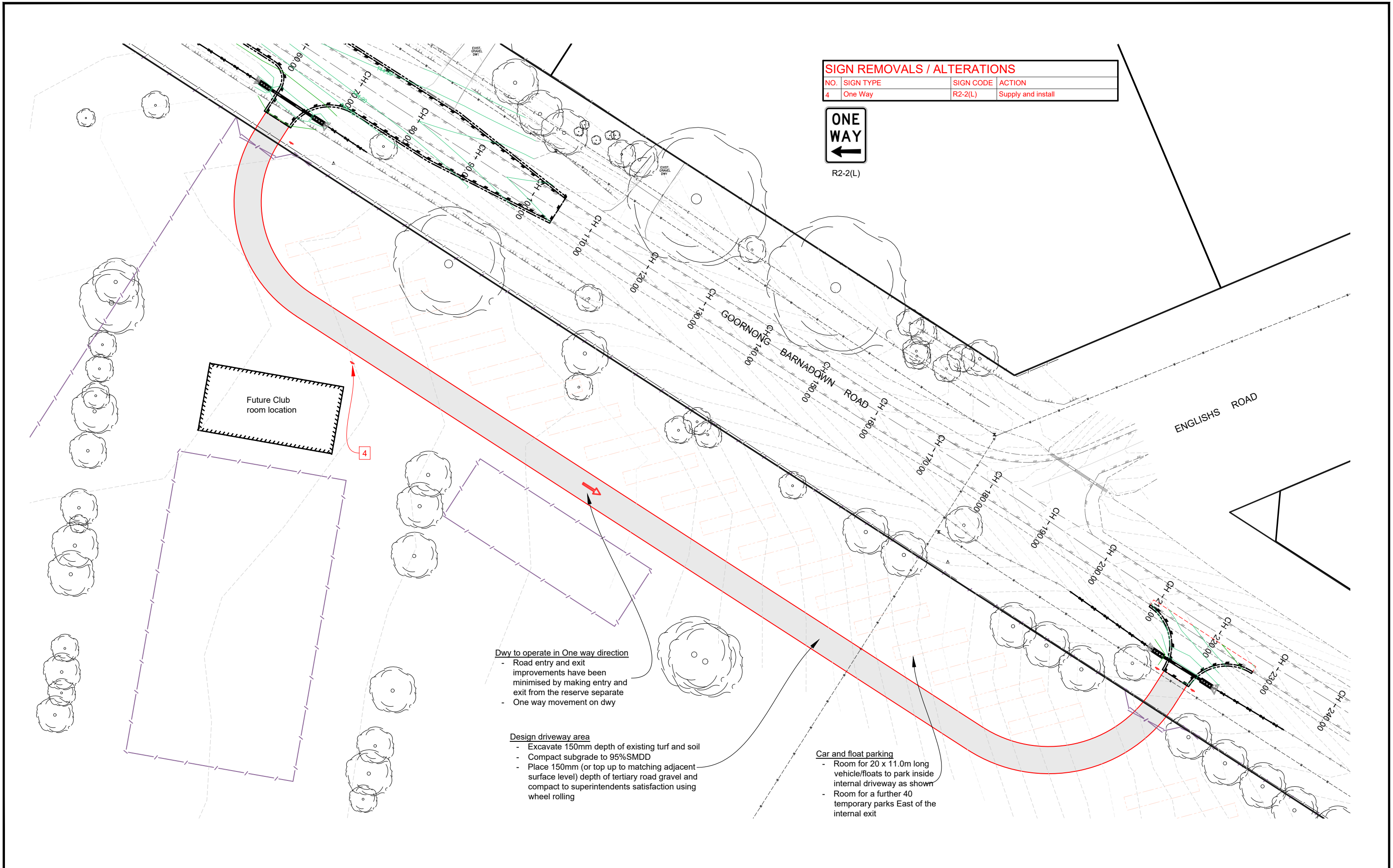
Plan Scale: 1:250

A3

Plotted: 10/10/2023 By: Nathan Sartori

SHEET REVISIONS AFTER TENDER

| Revision | Description | Approved by | Date |
|----------|-------------|-------------|------|
| - | - | - | - |
| - | - | - | - |
| - | - | - | - |



| SIGN REMOVALS / ALTERATIONS | | | |
|-----------------------------|-----------|-----------|--------------------|
| NO. | SIGN TYPE | SIGN CODE | ACTION |
| 4 | One Way | R2-2(L) | Supply and install |



Dwy to operate in One way direction

- Road entry and exit improvements have been minimised by making entry and exit from the reserve separate
- One way movement on dwy

Design driveway area

- Excavate 150mm depth of existing turf and soil
- Compact subgrade to 95%SMDD
- Place 150mm (or top up to matching adjacent surface level) depth of tertiary road gravel and compact to superintendents satisfaction using wheel rolling

Car and float parking

- Room for 20 x 11.0m long vehicle/floats to park inside internal driveway as shown
- Room for a further 40 temporary parks East of the internal exit

LEGEND

| | | | | | |
|--|--------------------|--|--|--|--|
| | DESIGN LINEMARKING | | DESIGN SEAL (Refer: Typical road pavement detail.) | | DESIGN MULCHED BATTER AREAS (Refer: Typical road pavement detail.) |
| | DESIGN SEAL EDGE | | DESIGN UNSEALED SHOULDERS (Refer: Typical road pavement detail.) | | DESIGN GRAVEL DRIVEWAY 150mm depth tertiary road gravel |
| | DESIGN SHOULDER | | DESIGN EARTHEN BATTER AREAS (Refer: Typical road pavement detail.) | | DESIGN BEACHING 150mm depth 150Ø Rock beaching |
| | DESIGN INVERT | | | | |
| | DESIGN BATTER | | | | |
| | TREE REMOVALS | | DESIGN FENCE (by others) | | |

CITY OF GREATER BENDIGO

PROJECT DESIGN STATUS

| | | |
|------------------|------------|--------|
| Surveyor: | H. Whytock | Aug 23 |
| Designer: | N. Sartori | Sep 23 |
| Draft Checked: | A. Smith | Sep 23 |
| Tender Approved: | N. Sartori | Sep 23 |

PRELIMINARY DESIGN DRAFT 1

PROJECT DETAILS

Location: Goornong Pony club

Suburb: Goornong

Works: Pony club entrance and dwy

GB No: GB5016

SHEET DETAILS

INTERNAL DRIVEWAY DETAIL

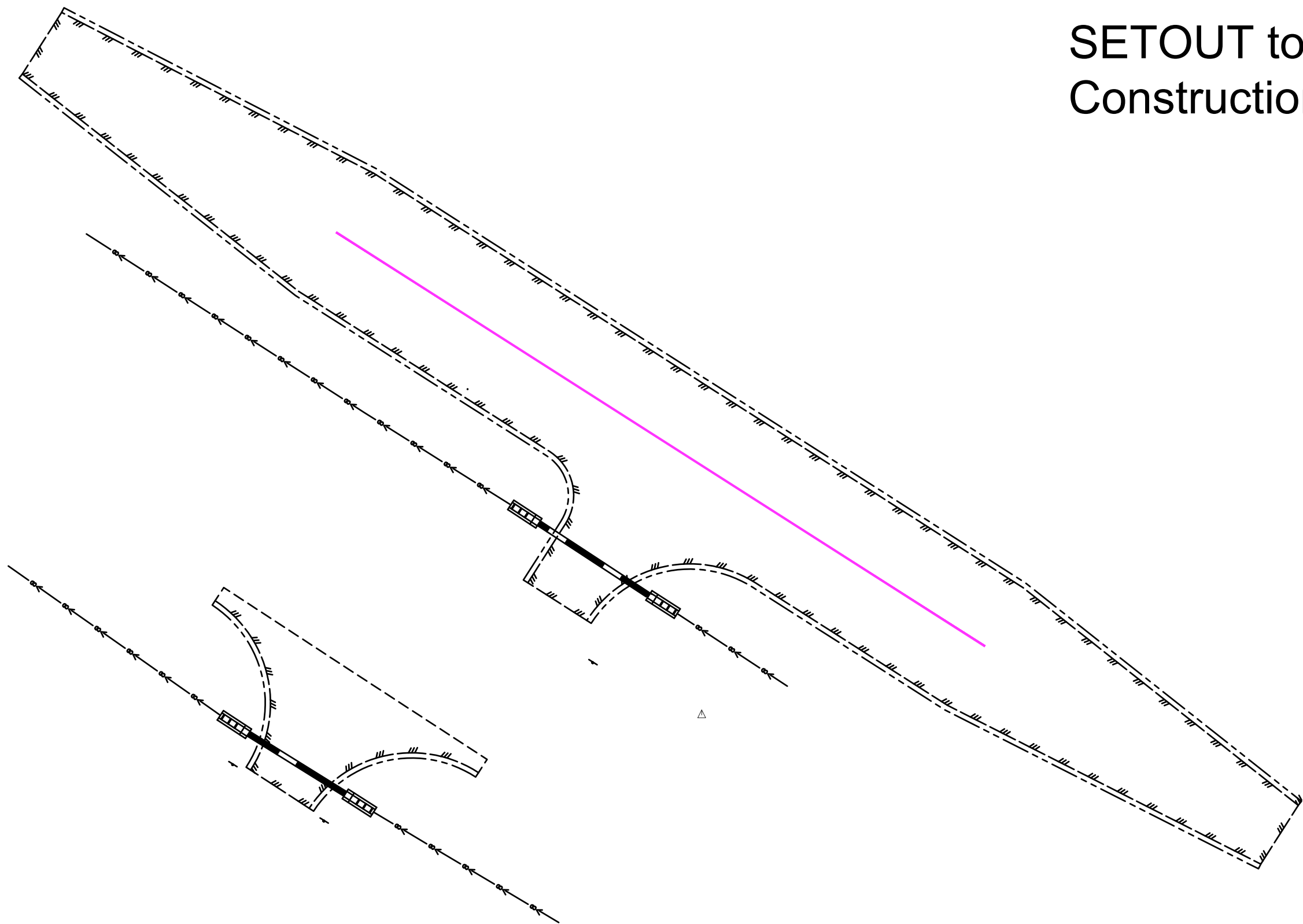
Sheet number: 7 of 8

Plan Scale: 1:500

Plotted: 10/10/2023 By: Nathan Sartori

| Revision | Description | Approved by | Date |
|----------|-------------|-------------|------|
| - | - | - | - |
| - | - | - | - |
| - | - | - | - |

SETOUT to be provided on
Construction issue



| PROJECT DESIGN STATUS | | |
|-------------------------------|------------|--------|
| Surveyor: | H. Whytock | Aug 23 |
| Designer: | N. Sartori | Sep 23 |
| Draft Checked: | A. Smith | Sep 23 |
| Tender Approved: | N. Sartori | Sep 23 |
| PRELIMINARY DESIGN DRAFT 1 | | |

| PROJECT DETAILS | |
|-----------------|----------------------------|
| Location: | Goornong Pony club |
| Suburb: | Goornong |
| Works: | Pony club entrance and dwy |
| GB No: | GB5016 |

| SHEET DETAILS | | | |
|--|-------------|-------------|----------------------|
| SETOUT | | | Sheet number: 8 of 8 |
| | | | Plan Scale: 1:250 A3 |
| Plotted: 10/10/2023 By: Nathan Sartori | | | |
| SHEET REVISIONS AFTER TENDER | | | |
| Revision | Description | Approved by | Date |
| - | - | - | - |
| - | - | - | - |
| - | - | - | - |