

# A visit to Strathdale Park PlaySpace



55 Crook Street  
Strathdale



## Social Story

Updated November, 2024 V1



CITY OF GREATER  
**BENDIGO**

# Guidelines

Thank you for choosing to use a Social Story written for Strathdale Park Playspace.

This Social Story is written by [Access Ability Australia](#) and is suited for a person who may live with autism spectrum disorder, a language disorder, social communication difficulties and/or a cognitive delay/disability.

For your Social Story to be successful, we recommend you follow these guidelines.

- Read Social Story often and preferably two weeks in advance of visit
- Social Story to be read and shared in an environment free of distractions
- Be calm, comfortable and honest when reading a Social Story
- Help the participant comprehend key points and consistently monitor for level of understanding
- Once the visit has taken place, revisit the Social Story to celebrate success

The City of Greater Bendigo hereby acknowledges the support and assistance provided by [Access Ability Australia](#) in helping to prepare this Social Story.

We express our sincere appreciation to Access Ability Australia for their pivotal role in assisting City of Greater Bendigo to highlight its commitment to accessibility and inclusion. Their expertise and support have played a vital role in ensuring that Eaglehawk Playspace is welcoming to all individuals in our community.

# Accessibility

- Seven accessible parking bays close to playspace entry points
  - General parking onsite. No restrictions
  - Ground surface from accessible parking bays to playspace entry - concrete, asphalt and gravel
  - Communication Access Sign
  - Playspace partially fenced. Wide, open entry points into playspace
  - Playspace ground surface – concrete, rubber matting, grass, tanbark and gravel
  - Accessible toilet
  - Baby change facilities within accessible toilet
  - Male and female toilets
  - Nearest Changing Places at Hargreaves Street Carpark, 3km from playspace
  - Accessible pathways to waterplay area, large play unit, disc spinner, carousel, swing set and springers
- Accessible specific play equipment includes liberty swing, swing with back support and harness, and roll on carousel (with standing and sitting options)
  - MLAK required for liberty swing gate access. MLAK key available from the [Bendigo Neighbourhood Hub](#) (Located next to playspace) in hub hours
  - Alternatively, an MLAK can be ordered from the Master Locksmiths Association of Australasia by completing the MLAK order form. <http://masterlocksmiths.com.au/mlak>
  - Small play unit and climbing frame on tanbark
  - Barbecues on site, undercover
  - Variety of seating including wooden seats and bench seats, some with back and armrests
  - Water fountain onsite
- Undercover waterplay area
  - Playspace with lots of shade from overhead trees
  - Quiet area available behind toilet block (grassed area)
  - Pathway to quiet area with gradient
  - Playspace is located within Strathdale Park – facilities at Strathdale Park include Helen Jessen Early Learning Centre, sporting field, tennis courts, walking track and waterways
  - Playspace near busy road and waterways. Children must be actively supervised at all times

# Sensory Guide

A Sensory Guide helps people understand what they might feel, hear, see or smell. It's useful for people who are sensitive to sensory experiences, such as those with autism or sensory processing disorder. This guide can be helpful in dealing with new or challenging situations.

## At Strathdale Park Playspace

### I might feel

- Being splashed (waterplay)
- Change in ground surface
- Cool water (waterplay)
- Dizziness (disc spinner and carousel)
- Flying insects
- Heights (climbing equipment)
- Increased body temperature
- Increased heart rate
- Sensation of flying (swings)
- Sensation of rocking (see saw, springers and swings)

- Shared personal space
- Stomach drops (slides)
- Uneven ground surfaces
- Unstable balance (see saw and large gecko)
- Varied ground surfaces
- Weather
- Weightlessness (swings and slides)
- Wet ground surface

### I might hear

- Birds
- Children playing
- Flying insects
- Gate latch (liberty swing)
- Nature
- Splashing

- Traffic
- Water running (waterplay area)
- Whistles (nearby sporting matches)

### I might see

- Birds
- Children playing
- Colourful play equipment
- Flying insects
- Glare
- Nature

### I might smell

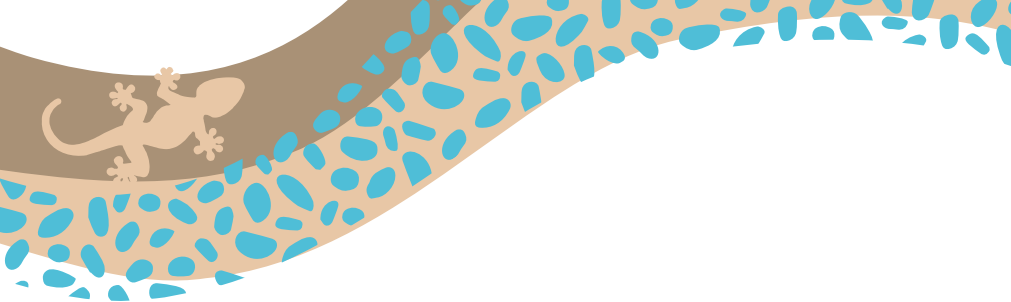
- Food/Drink (BBQs)
- Nature
- Sunscreen



# Strathdale Park PlaySpace map



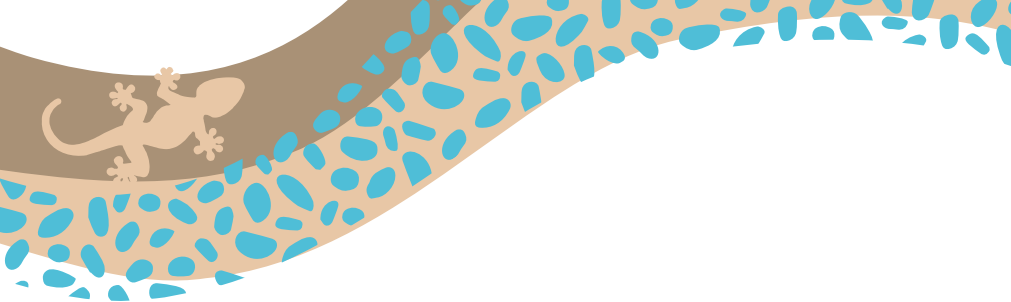




I am going to visit  
Strathdale Park Playspace.





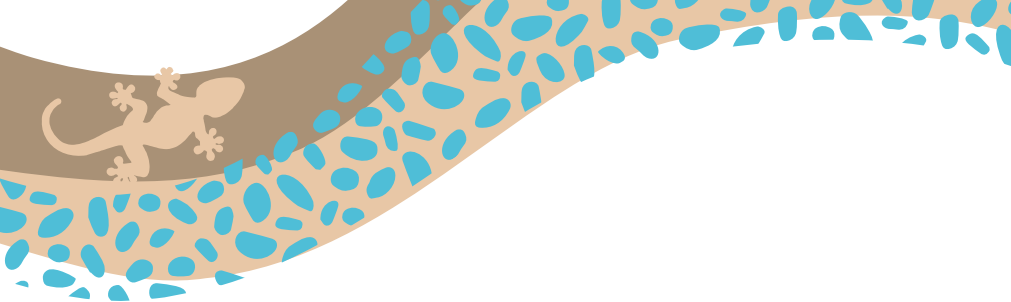


When we arrive, we will see lots of colourful play equipment.

I might see and hear children playing.







There are toilets.

My trusted adult can show me  
where the toilets are.

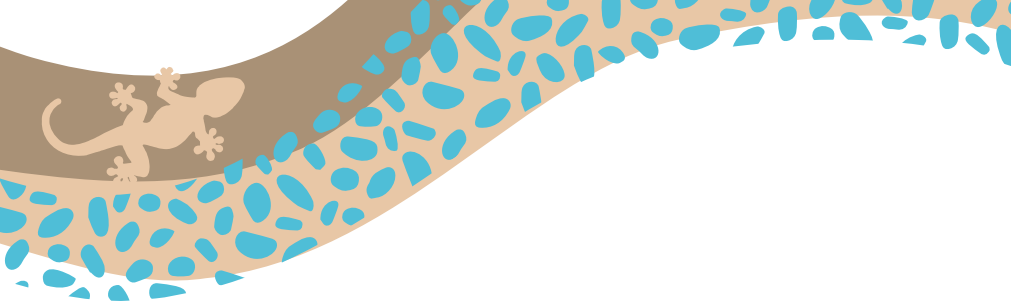




Strathdale Park Playspace has a lot of equipment to play on.







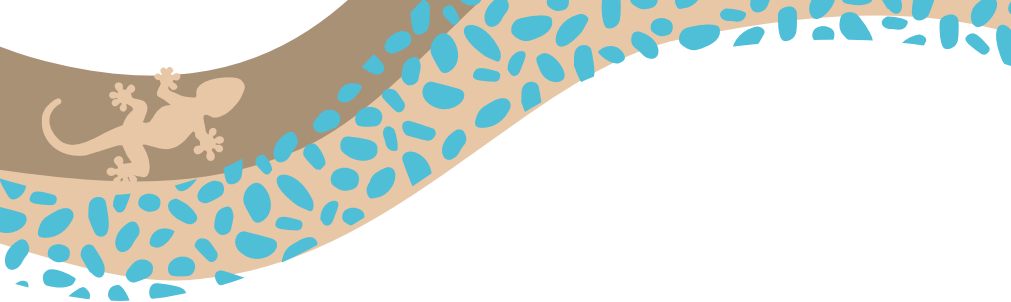
Other children might be lining  
up in front of me to use the play  
equipment.

I will try to wait my turn.

Waiting my turn is the fair thing  
to do.







Before I use the slides, I will try to wait until the person in front of me has finished their turn and moved away.

I will stand to the sides of the swings and flying fox while waiting my turn.

This is important to keep me safe.







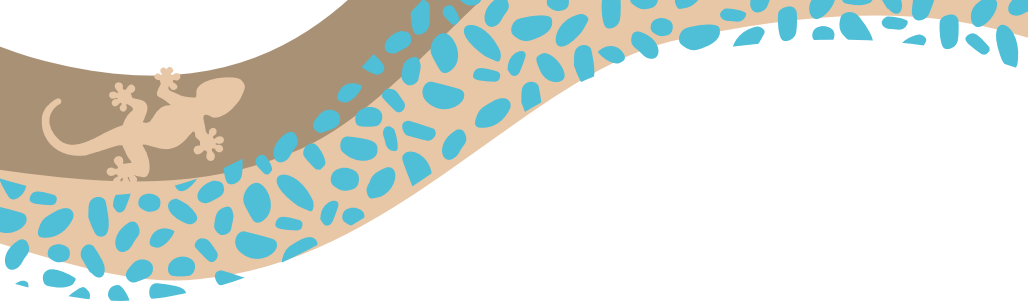
Strathdale Park Playspace has play units.

There are lots of things to play with in and around the play units.

I might play with the steering wheel or slide down the fireman's pole.







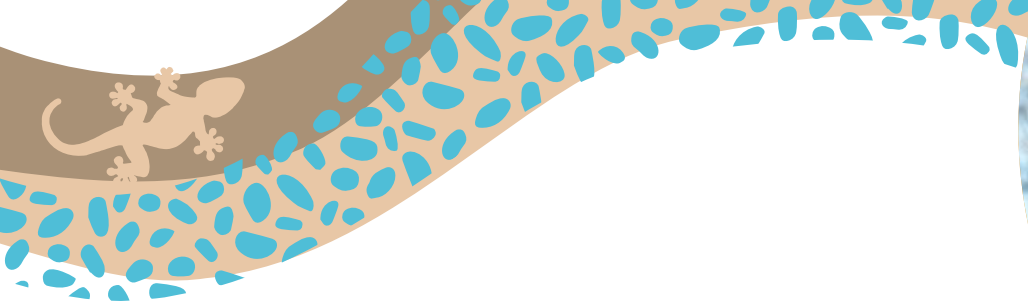
There is a carousel.

There is a disc spinner.

There is a see saw.





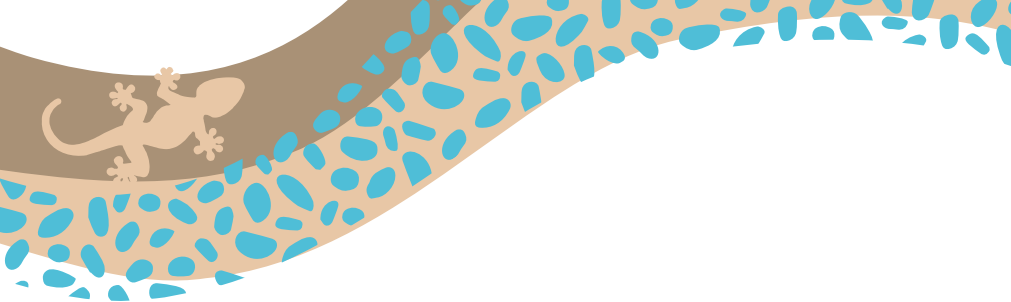


There is a climbing cube.

I can use the ladder, hanging ropes or nets to climb up the cube.





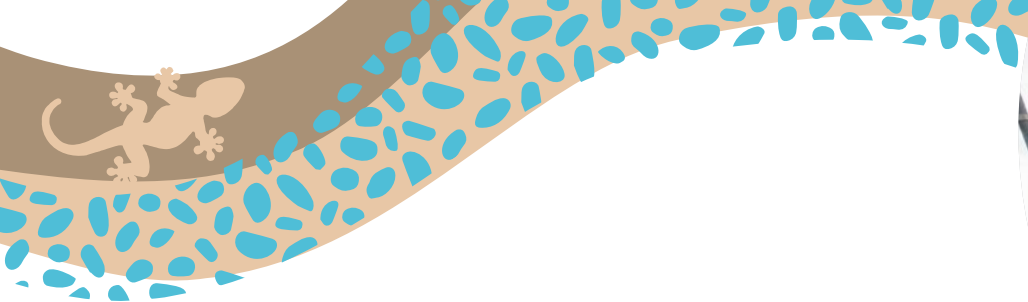


There are springers shaped like a car, fish and tram.

I can sit on the springers and rock forwards and backwards.





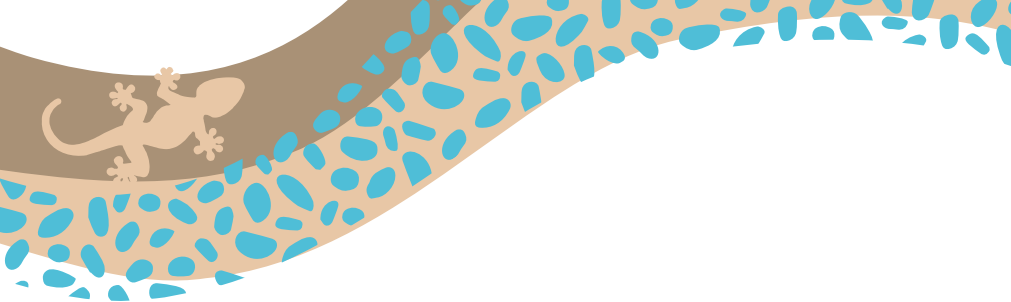


There is a waterplay area.

I can push a button or push the water pump up and down to make the water come out.





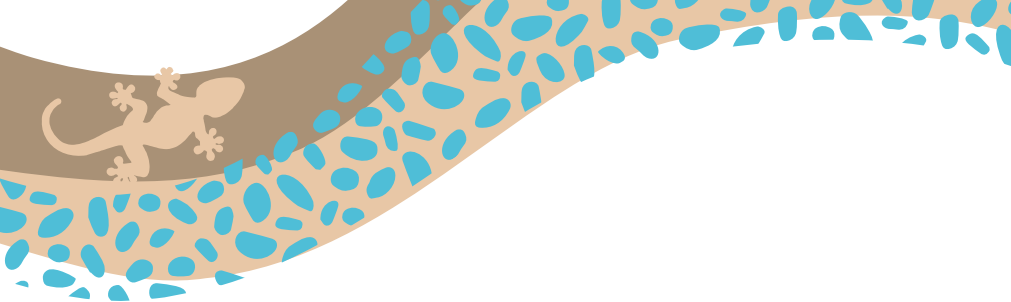


There is a giant concrete gecko next to the waterplay area.

I might like to climb on the gecko.







There is a nature play area.

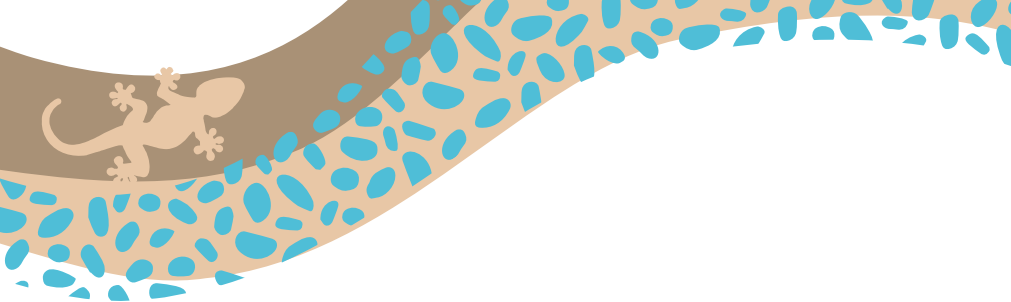
I can walk along the logs or wooden steppers.

There are big wooden orbs.

I can sit inside the orbs or climb up to the top.







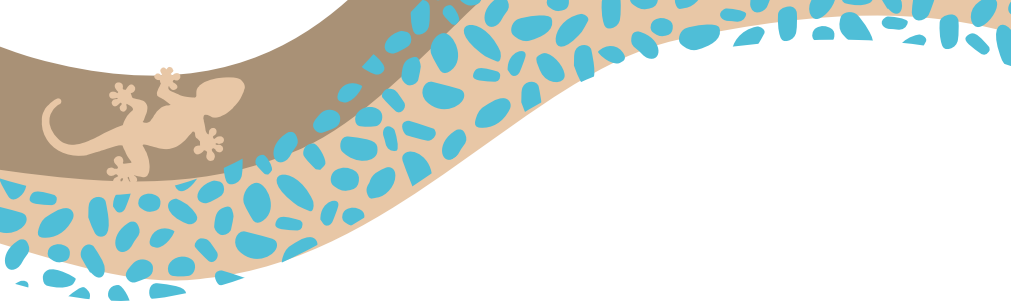
There are areas with grass at  
Strathdale Park Playspace.

The grassed areas are nice places  
to sit and have something to eat  
or drink.

There are barbecues too.







I must stay close to my trusted adult, inside the playspace.

This is important so that my trusted adult can see me and keep me safe.







Sometimes, other people may be making noise.

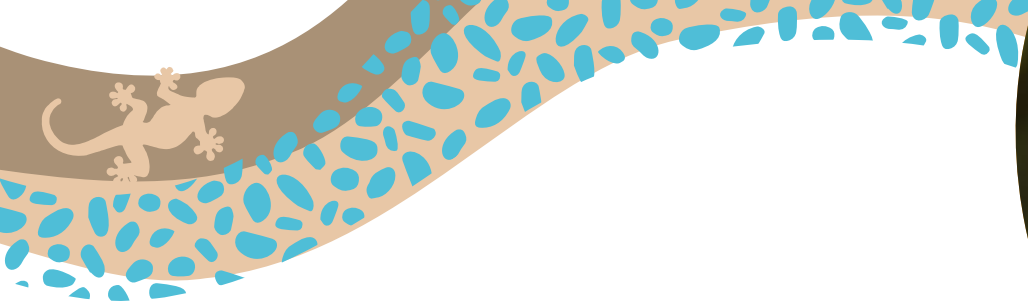
This means they are having fun, that is okay.

I can wear my headphones or earbuds to help with the noise.

I might ask my trusted person if we can go to a grassy area for some quiet time.







Strathdale Park Playspace  
is lots of fun!





# Let's play and chat!

I/Me/My	Want	Yes	No	I don't speak English	Finish	Junior play unit	Water channel	I like it	I don't like it
You/Your	Turn	Play	Bounce	On	Off	Lizard/Gecko	Water play table	Happy	Sad
What	Help	Go	Stop/Wait	High/Big	Low/Little	Satellite swings	Wheelspin	Hungry/Eat	Thirsty/Drink
Where	More/Again	See/Look	Loud/Noisy	Climb	Accessible toilet	See-saw	Fun	Tired/Rest	Hurt
Who	Don't/Can't	Up	Down	Push	Bridge	Spinning pole			
I don't know	Time	Fast	Slow	Home	Double rocker	Stepping rocks			
Emergency	Sit/Rest	Walk	Run	Deaf/Hard of hearing	Hammock	Toilets			

☐ Everyday words
 ☐ Activities
 ☐ Feelings/Emotions

## Instructions

This sign can be used to support communication. It can help people to understand and share information about their experiences. Use this sign to:

- **Make requests**  
eg. I want to play on the slide
- **Ask questions**  
eg. where is the toilet?
- **Express needs**  
eg. I need a drink
- **Comment on activities and share the fun!**



Watch an instructional video





## Contacts

55 Crook Street  
Strathdale, VIC, 3550

Phone 1300 002 642  
(City of Greater Bendigo)

[Website](#)

# Strathdale Park Playspace

