

CHURCH STREET, KANGAROO FLAT

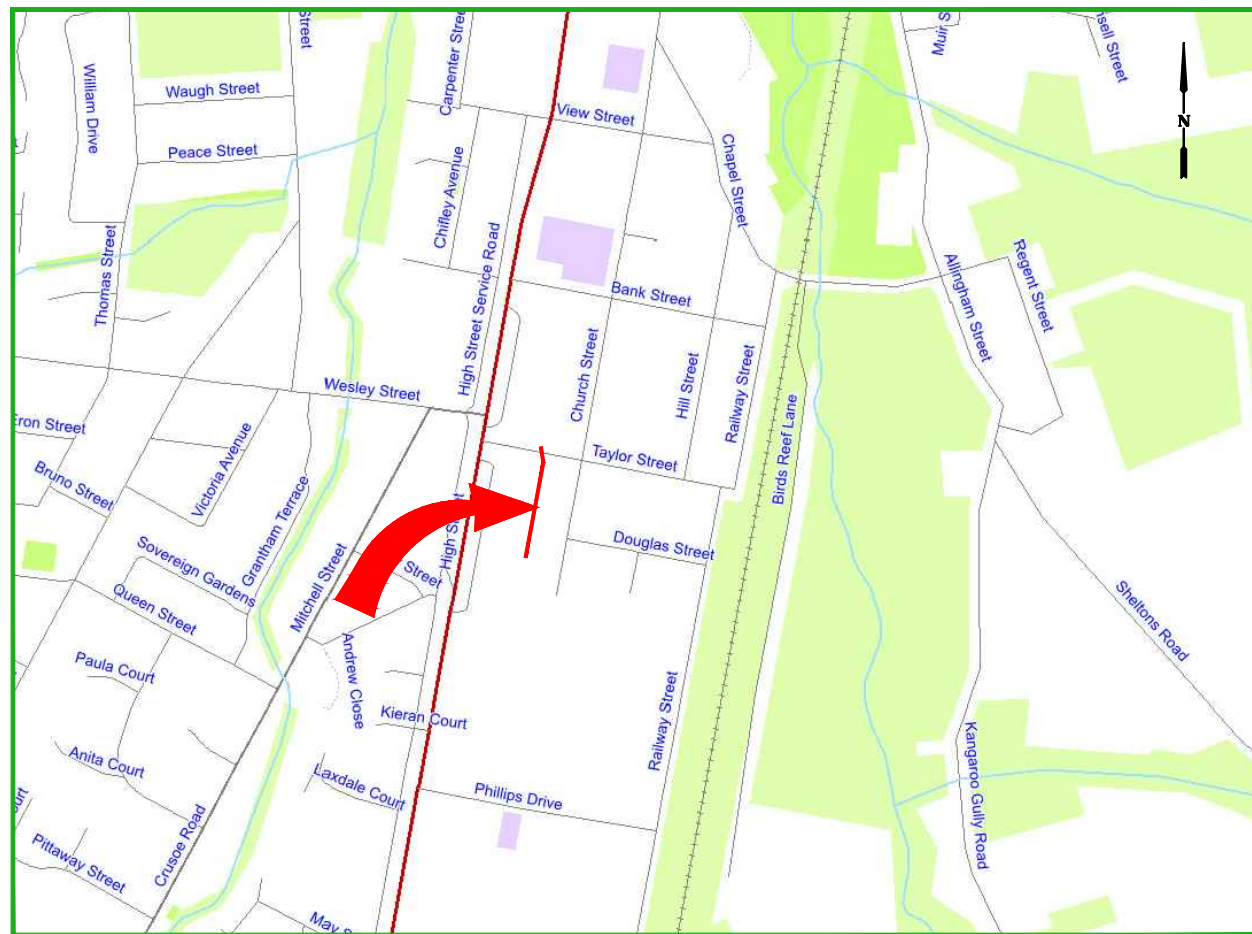
GB5041

EASEMENT DRAINAGE UPGRADE

NOVEMBER 2022



| DOCUMENT CONTROL | | | | |
|------------------|--------------------------------------|------------|----------|--------------|
| SHEET No. | SHEETD ESC. | 10/11/2022 | xx/xx/20 | xx/xx/20 |
| | | DRAFT | TENDER | CONSTRUCTION |
| | | REVISION | REVISION | REVISION |
| 1 | COVER SHEET | A | | |
| 2 | GENERAL NOTES, SETOUT & PIT SCHEDULE | A | | |
| 3 | OVERALL LAYOUT PLAN | A | | |
| 4 | LAYOUT PLAN | A | | |
| 5 | DRAINAGE LONG SECTION | A | | |



LOCALITY MAP



PROJECT EXTENTS

| PROJECT PLANNING REQUIREMENTS | | | | AMENDMENTS | | | |
|-------------------------------|----------|----------|------------|------------|-------------|-------------|------|
| Item | Required | Comments | Contractor | Revision | Description | Approved by | Date |
| Vegetation | No | - | | - | - | - | - |
| RRV | No | - | | | | | |
| CMA | No | - | | | | | |
| Planning Permit | No | - | | | | | |
| Land Acquisition | No | - | | | | | |
| CHMP | No | - | | | | | |
| Other | No | - | | | | | |

| | |
|--|--|
| CITY OF GREATER BENDIGO | |
| | |
| CHURCH STREET KANGAROO FLAT EASEMENT DRAIN | |
| COVER SHEET | |

| | | |
|-------------------------|-------------------|------------|
| Survey | H. WHYTECK | 12/08/2022 |
| Design | A. SMITH | 19/09/2022 |
| Checked | L. OLIVER | -/-/21 |
| Approved by | N. SARTORI | -/-/21 |
| Scale: - | Revision: A | |
| Original sheet size: A3 | File: GB5041.dwg | |
| Sheet: 1 OF 5 | Reference: GB5041 | |

**PRELIMINARY DESIGN
DRAFT 5**

Plot Date: 10/11/2022
Plotted By: ANDREW SMITH

DRAINAGE CONSTRUCTION NOTES

1. The Superintendent's Representative and Design Engineer must be notified if any any modifications to drainage design are required due to unforeseen circumstances identified during works onsite.
2. Any property storm water pipes located during Works are to be plumbed to the nearest pit. Where this is not practical, seek approval from the Superintendent's Representative to connect stormwater into kerb or into the nearest storm water pipe.
3. All drainage pits are to be constructed as per the noted Standard Drawing.
4. Invert fall through pits is to be a min. of 30mm unless noted otherwise.
5. Concrete pit walls are to be sponge finished and floors are to be shaped for best hydraulic efficiency unless noted otherwise.
6. Pit lids are to be installed flush with the surrounding surface unless noted otherwise.
7. Where concrete box culverts (CBC) or Crown Units are specified, they are to be compliant to AS1597.
8. Pipe extensions are to be constructed by removing the remaining stub of the existing pipe to be extended, and then connecting the new pipe at the socket.
9. All pipe backfill is to be constructed as per the noted Standard Drawing.
10. The location of any saw cuts in asphalt are to be kept the minimum required trench width until after the pipe is laid and backfilled up to 300mm from surface. At this point, a further 150mm wide, 300mm deep section of asphalt/pavement is to be sawcut and excavated so as to provide a longitudinal pavement join over the drainage trench. This also should ensure a straight edge for re-asphalting. The top 300m depth of backfill should then be constructed accordingly.
11. At the completion of the Works, pipes are to be visually inspected via inspection pits to check for construction debris, including crushed rock, soil and concrete over spill. Should a volume of debris be present enough to impede flows, pipe cleaning shall be undertaken at the contractors expense.
12. Gas and water property services are generally not located during the design phase and therefore have not been shown on plans. It is therefore the Contractors responsibility to consider these services when excavating and adjust or realign accordingly whilst causing minimal disruption to property owners.
13. Gas and Water property services encountered during construction are to be altered and reconnected to the appropriate standard and to the satisfaction of the Superintendents Representative.


| STATION DATA | | | | |
|--------------|-------------|------------|-------------|---------|
| Point # | Description | Easting | Northing | Level |
| 4 | PSM 15 | 253940.876 | 5923464.698 | 253.531 |
| 901 | STN 1 | 254066.026 | 5923228.643 | 257.825 |
| 902 | STN 2 | 254081.950 | 5923312.489 | 255.530 |
| 903 | STN 3 | 254096.905 | 5923403.738 | 254.674 |
| 904 | STN 4 | 254043.776 | 5923409.170 | 253.941 |

| Pit Schedule - Drain | | | | | | | | | | |
|----------------------|----------------|--------------------------------|-----------|------------|-----------------|------------------|----------------|-----------------|-----------|---------------|
| Pit No. | Pit Type | Standard Drawing | Pit Width | Pit Length | Outlet Diameter | Outlet Invert RL | Inlet Diameter | Inlet Invert RL | Pit Depth | Pit Lid Level |
| | | | (mm) | (mm) | (mm) | (m) | (mm) | (m) | (m) | (m) |
| 1 | Junction Pit | Replace with Class D Gatic lid | - | - | | | 450 | 252.920 | 1.048 | 253.968 |
| 2 | Side Entry Pit | CoGB SD 590 A-D-G-T | 900 | 900 | 450 | 252.986 | 375 | 253.044 | 0.890 | 253.876 |
| 3 | Grated Pit | CoGB SD 590 A-D-L-U | 600 | 600 | 375 | 253.106 | 375 | 253.136 | 0.892 | 253.998 |
| 4 | Grated Pit | CoGB SD 590 A-D-L-U | 600 | 600 | 375 | 253.356 | 300 | 253.376 | 0.867 | 254.223 |
| 5 | Grated Pit | CoGB SD 590 A-D-L-U | 600 | 600 | 300 | 253.575 | 300 | 253.595 | 0.760 | 254.335 |
| 6 | Grated Pit | CoGB SD 590 A-D-L-U | 600 | 600 | 300 | 253.773 | 300 | 253.810 | 0.711 | 254.483 |
| 7 | Grated Pit | CoGB SD 590 A-D-L-U | 600 | 600 | 300 | 253.967 | 300 | 254.018 | 0.738 | 254.705 |
| 8 | Grated Pit | CoGB SD 590 A-D-L-U | 600 | 600 | 300 | 254.224 | 250 | 254.265 | 0.693 | 254.917 |
| 9 | Grated Pit | CoGB SD 590 A-D-L-U | 600 | 600 | 250 | 254.519 | 250 | 254.539 | 0.628 | 255.147 |
| 10 | Grated Pit | CoGB SD 590 A-D-L-U | 600 | 600 | 250 | 254.851 | 150 | 254.976 | 0.717 | 255.568 |

AMENDMENTS

| Revision | Description | Approved by | Date |
|----------|-------------|-------------|------|
| - | - | - | - |
| | | | |
| | | | |
| | | | |
| | | | |
| | | | |
| | | | |

CITY OF GREATER BENDIGO



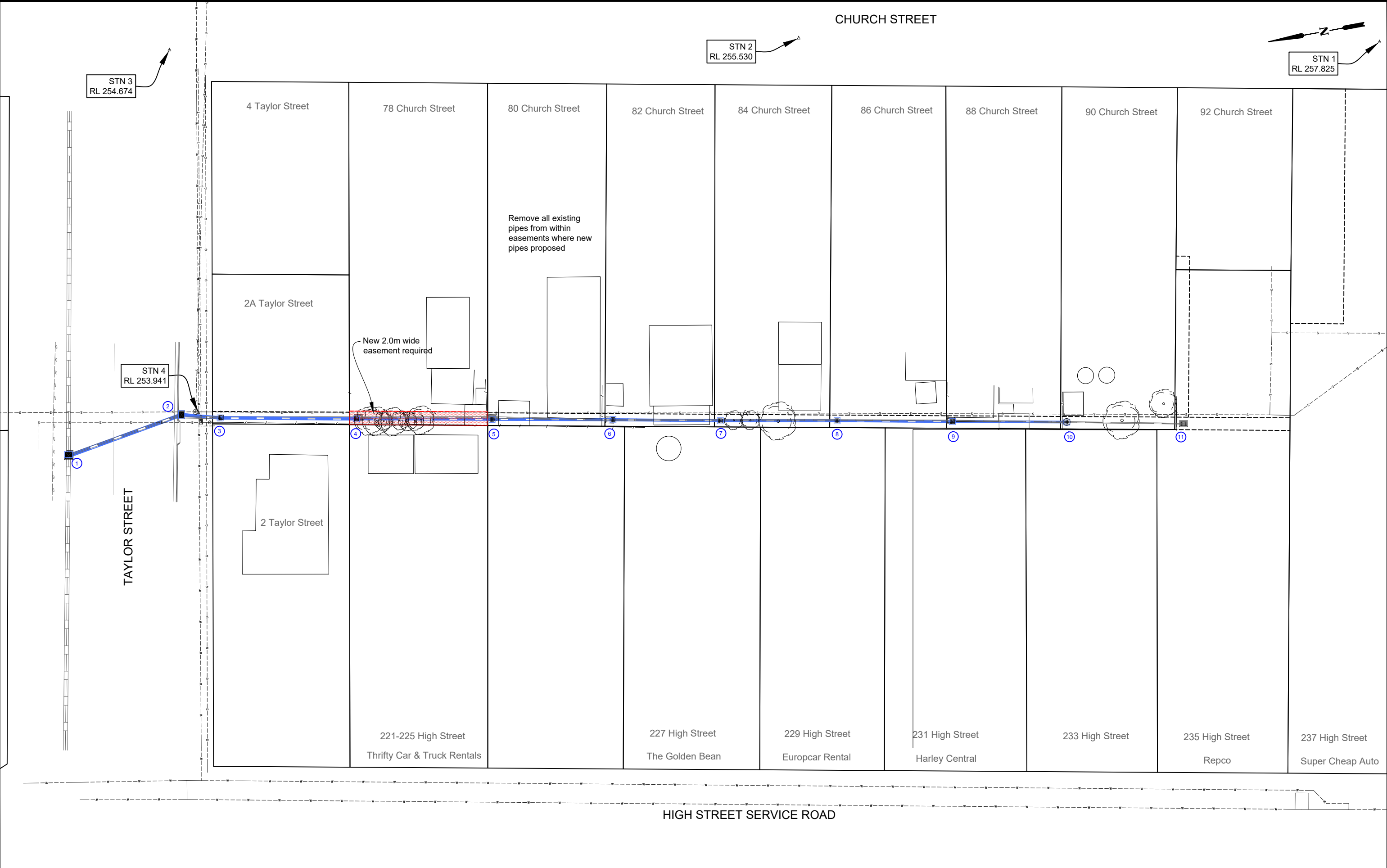
CHURCH STREET
KANGAROO FLAT
EASEMENT DRAIN

GENERAL NOTES, SETOUT & PIT SCHEDULE


| | | |
|-------------------------|-------------------|------------|
| Survey | H. WHYTECK | 12/08/2022 |
| Design | A. SMITH | 19/09/2022 |
| Checked | L. OLIVER | -/-/21 |
| Approved by | N. SARTORI | -/-/21 |
| Scale: - | Revision : A | |
| Original sheet size: A3 | File : GB5041.dwg | |
| Sheet: 2 OF 5 | Reference: GB5041 | |

PRELIMINARY DESIGN
DRAFT 5

Plot Date: 10/11/2022
Plotted By: ANDREW SMITH



| AMENDMENTS | | | |
|------------|-------------|-------------|------|
| Revision | Description | Approved by | Date |
| - | - | - | - |
| | | | |
| | | | |
| | | | |
| | | | |
| | | | |
| | | | |



CITY OF GREATER BENDIGO

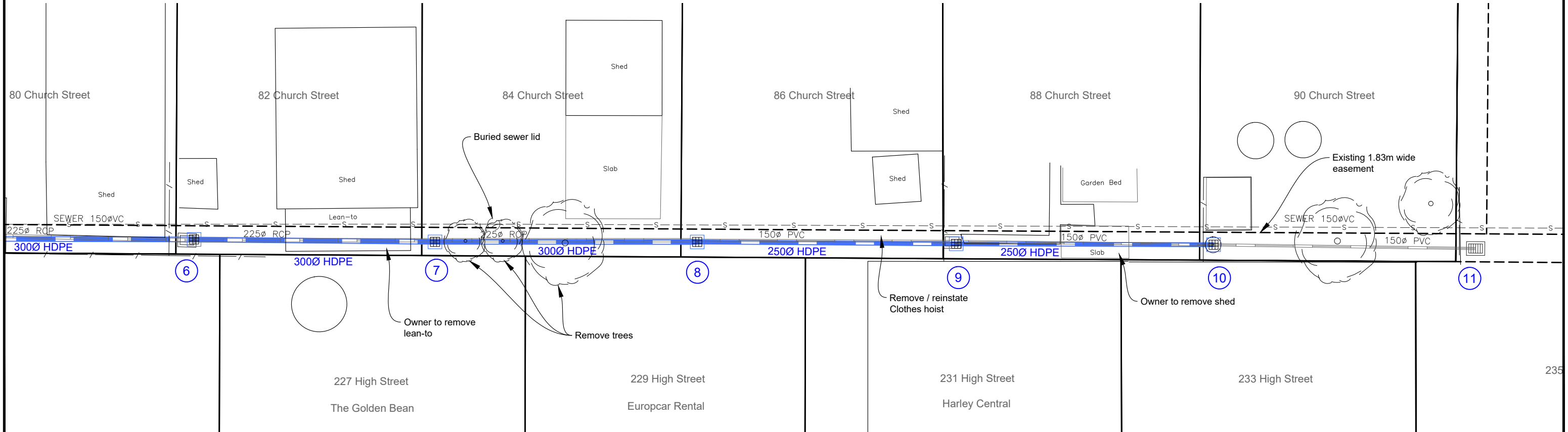
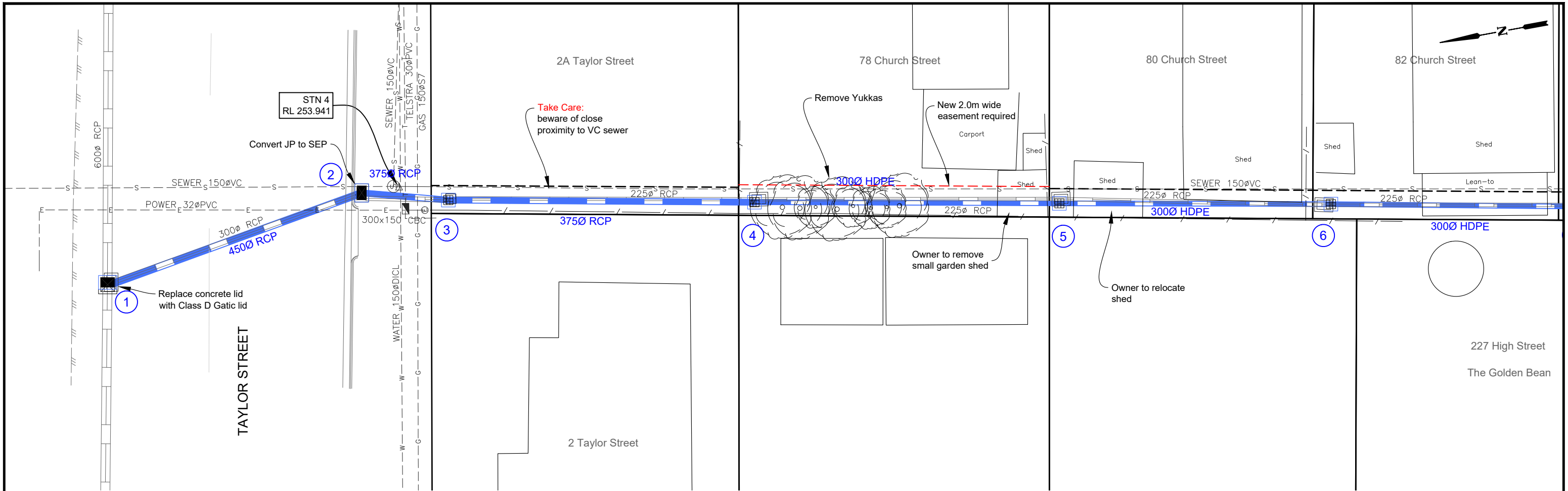
CHURCH STREET
KANGAROO FLAT
EASEMENT DRAIN

OVERALL LAYOUT PLAN

| | | |
|-------------------------|-------------------|------------|
| Survey | H. WHYTOCK | 12/08/2022 |
| Design | A. SMITH | 19/09/2022 |
| Checked | L. OLIVER | -/-/21 |
| Approved by | N. SARTORI | -/-/21 |
| Scale: 1 : 500 | Revision : A | |
| Original sheet size: A3 | File : GB5041.dwg | |
| Sheet: 3 OF 5 | Reference: GB5041 | |

**PRELIMINARY DESIGN
DRAFT 5**

Plot Date: 10/11/2022
Plotted By: ANDREW SMITH



IMPORTANT!

The location of underground services have been derived from available information, however accuracy cannot be guaranteed. All existing service information should therefore be treated as indicative only, and service locations must be arranged prior to commencement of any excavation. The contractor will be held responsible for any damage caused to underground services.

| AMENDMENTS | | | |
|------------|-------------|-------------|------|
| Revision | Description | Approved by | Date |
| - | - | - | - |
| | | | |
| | | | |
| | | | |
| | | | |
| | | | |
| | | | |

CITY OF GREATER BENDIGO

CHURCH STREET

KANGAROO FLAT

EASEMENT DRAIN

LAYOUT PLAN

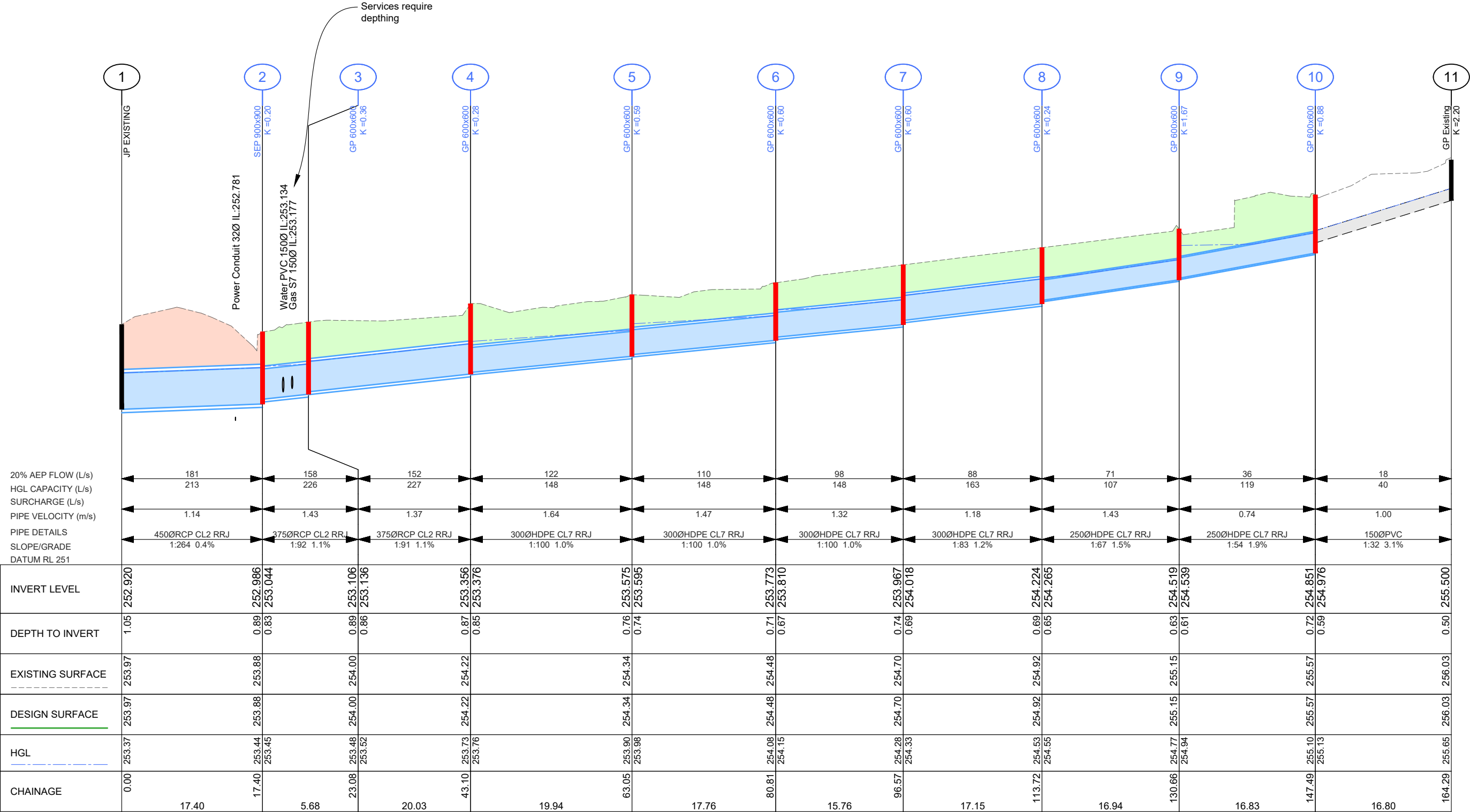
| | | |
|-------------------------|-------------------|------------|
| Survey | H. WHYTECK | 12/08/2022 |
| Design | A. SMITH | 19/09/2022 |
| Checked | L. OLIVER | -/-/21 |
| Approved by | N. SARTORI | -/-/21 |
| Scale: 1 : 250 | Revision : A | |
| Original sheet size: A3 | File : GB5041.dwg | |
| Sheet: 4 OF 5 | Reference: GB5041 | |

PRELIMINARY DESIGN

DRAFT 5

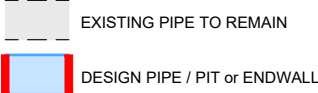
Plot Date: 10/11/2022

Plotted By: ANDREW SMITH



DRAINAGE LONGITUDINAL SECTION
SCALES: HORIZONTAL 1:500 VERTICAL 1:50

LEGEND



- CoGB SD390 TRENCH BACKFILL (BEHIND KERB)
- CoGB SD391 TRENCH BACKFILL (UNDER NEW ROAD)
- CoGB SD392 TRENCH BACKFILL (UNDER EXISTING ROAD)

AMENDMENTS

| Revision | Description | Approved by | Date |
|----------|-------------|-------------|------|
| - | - | - | - |
| | | | |
| | | | |
| | | | |
| | | | |
| | | | |

CITY OF GREATER BENDIGO



CHURCH STREET
KANGAROO FLAT
EASEMENT DRAIN
DRAINAGE LONG SECTION

| | | |
|-------------------------|-------------------|------------|
| Survey | H. WHYTEOCK | 12/08/2022 |
| Design | A. SMITH | 19/09/2022 |
| Checked | L. OLIVER | -/-21 |
| Approved by | N. SARTORI | -/-21 |
| Scale: As Shown | Revision : A | |
| Original sheet size: A3 | File : GB5041.dwg | |
| Sheet: 5 OF 5 | Reference: GB5041 | |

PRELIMINARY DESIGN
DRAFT 5

Plot Date: 10/11/2022
Plotted By: ANDREW SMITH