

PETHARD PLACE TO MARONG ROAD GOLDEN SQUARE

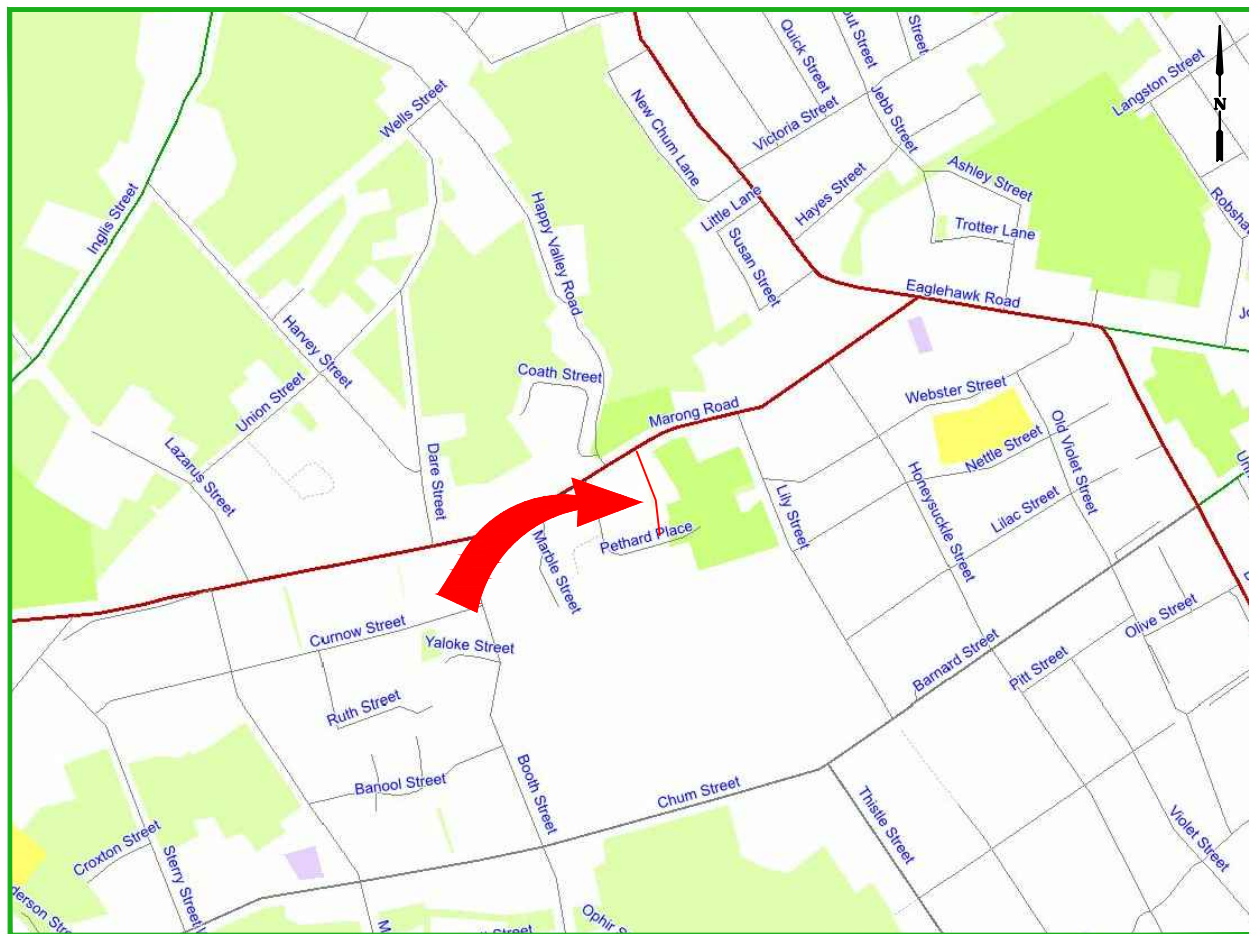
GB5043

EASEMENT DRAINAGE

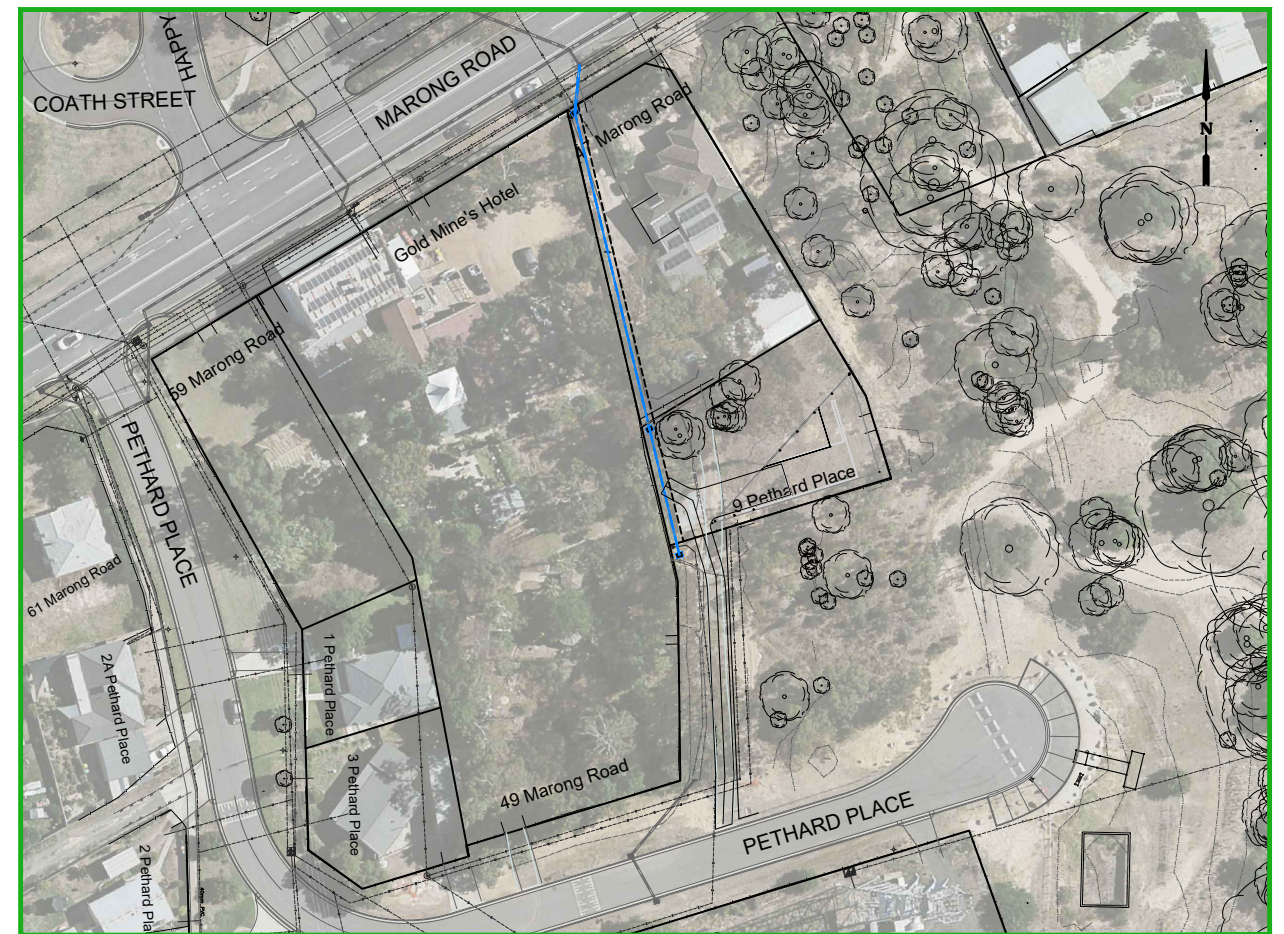
JULY 2022



| DOCUMENT CONTROL | | | | |
|------------------|----------------------------|----------------|-----------------|-----------------------|
| SHEET No. | SHEET DESC. | 27/07/2022 | xx/xx/xx | xx/xx/xx |
| | | DRAFT REVISION | TENDER REVISION | CONSTRUCTION REVISION |
| 1 | COVER SHEET | A | | |
| 2 | NOTES, PLAN & PIT SCHEDULE | A | | |
| 3 | DRAINAGE LONG SECTION | A | | |



LOCALITY MAP



PROJECT EXTENTS

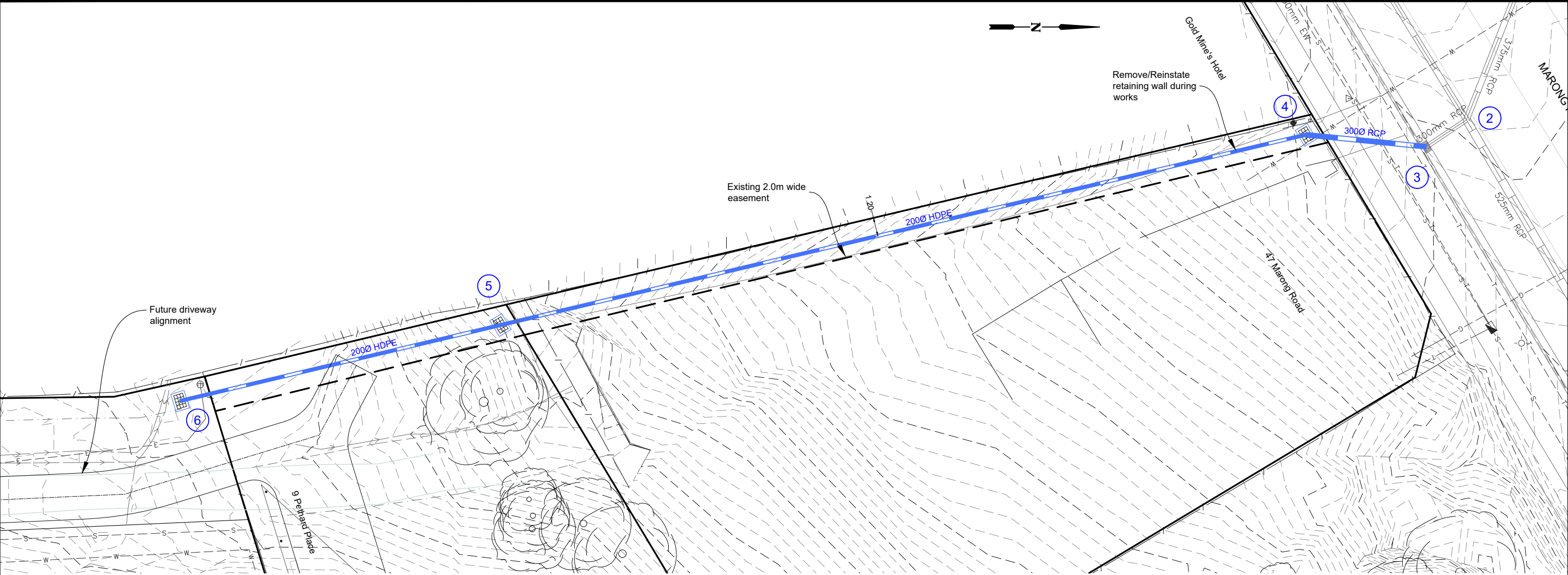
| PROJECT PLANNING REQUIREMENTS | | | | AMENDMENTS | | | |
|-------------------------------|----------|----------|------------|------------|-------------|-------------|------|
| Item | Required | Comments | Contractor | Revision | Description | Approved by | Date |
| Vegetation | No | - | | - | - | - | - |
| RRV | No | - | | | | | |
| CMA | No | - | | | | | |
| Planning Permit | No | - | | | | | |
| Land Acquisition | No | - | | | | | |
| CHMP | No | - | | | | | |
| Other | No | - | | | | | |

| CITY OF GREATER BENDIGO | |
|---|--|
|  | PETHARD PL TO MARONG RD GOLDEN SQUARE EASEMENT DRAINAGE COVER SHEET |

| | | |
|-------------------------|-------------------|------------|
| Survey | A. SMITH | 01/01/2004 |
| Design | A. SMITH | 30/06/2022 |
| Checked | L. OLIVER | -/-/21 |
| Approved by | N. SARTORI | -/-/21 |
| Scale: - | Revision: A | |
| Original sheet size: A3 | File: GB5043.dwg | |
| Sheet: 1 OF 3 | Reference: GB5043 | |

**PRELIMINARY DESIGN
DRAFT 5**

Plot Date: 27/07/2022
Plotted By: ANDREW SMITH



DRAINAGE CONSTRUCTION NOTES

- 1. The Superintendent's Representative and Design Engineer must be notified if any any modifications to drainage design are required due to unforeseen circumstances identified during works onsite.
- 2. Any property storm water pipes located during Works are to be plumbed to the nearest pit. Where this is not practical, seek approval from the Superintendent's Representative to connect stormwater into kerb or into the nearest storm water pipe.
- 3. All drainage pits are to be constructed as per the noted Standard Drawing.
- 4. Invert fall through pits is to be a min. of 30mm unless noted otherwise.
- 5. Concrete pit walls are to be sponge finished and floors are to be shaped for best hydraulic efficiency unless noted otherwise.
- 6. Pit lids are to be installed flush with the surrounding surface unless noted otherwise.
- 7. Where concrete box culverts (CBC) or Crown Units are specified, they are to be compliant to AS1597.
- 8. Pipe extensions are to be constructed by removing the remaining stub of the existing pipe to be extended, and then connecting the new pipe at the socket.
- 9. All pipe backfill is to be constructed as per the noted Standard Drawing.
- 10. The location of any saw cuts in asphalt are to be kept the minimum required trench width until after the pipe is laid and backfilled up to 300mm from surface. At this point, a further 150mm wide, 300mm deep section of asphalt/pavement is to be sawcut and excavated so as to provide a longitudinal pavement join over the drainage trench. This also should ensure a straight edge for re-asphalting. The top 300m depth of backfill should then be constructed accordingly.
- 11. At the completion of the Works, pipes are to be visually inspected via inspection pits to check for construction debris, including crushed rock, soil and concrete over spill. Should a volume of debris be present enough to impede flows, pipe cleaning shall be undertaken at the contractors expense.
- 12. Gas and water property services are generally not located during the design phase and therefore have not been shown on plans. It is therefore the Contractors responsibility to consider these services when excavating and adjust or realign accordingly whilst causing minimal disruption to property owners.
- 13. Gas and Water property services encountered during construction are to be altered and reconnected to the appropriate standard and to the satisfaction of the Superintendents Representative.

IMPORTANT!

The location of underground services have been derived from available information, however accuracy cannot be guaranteed. All existing service information should therefore be treated as indicative only, and service locations must be arranged prior to commencement of any excavation. The contractor will be held responsible for any damage caused to underground services.

| Pit Schedule - Drain | | | | | | | | | | | |
|----------------------|------------|------------------|-----------|------------|-----------------|------------------|----------------|-----------------|-----------|---------------|----------------|
| Pit No. | Pit Type | Standard Drawing | Pit Width | Pit Length | Outlet Diameter | Outlet Invert RL | Inlet Diameter | Inlet Invert RL | Pit Depth | Pit Lid Level | Comment |
| | | | (mm) | (mm) | (mm) | (m) | (mm) | (m) | (m) | (m) | |
| 3 | JP 900x600 | Existing Pit | 600 | 900 | 300 | 262.900 | 300 | 262.920 | 1.020 | 263.920 | Break into Pit |
| 4 | GP 900x600 | SD590A-D-L-U | 600 | 900 | 300 | 263.038 | 200 | 263.500 | 1.411 | 264.449 | |
| 5 | GP 900x600 | SD590A-D-L-U | 600 | 900 | 200 | 267.909 | 200 | 267.966 | 1.073 | 268.982 | |
| 6 | GP 900x600 | SD590A-D-L-U | 600 | 900 | 200 | 269.917 | - | - | 0.839 | 270.756 | |

| AMENDMENTS | | | |
|------------|-------------|-------------|------|
| Revision | Description | Approved by | Date |
| - | - | - | - |
| | | | |
| | | | |
| | | | |
| | | | |
| | | | |
| | | | |

CITY OF GREATER BENDIGO

PETHARD PL TO MARONG RD
GOLDEN SQUARE
EASEMENT DRAINAGE

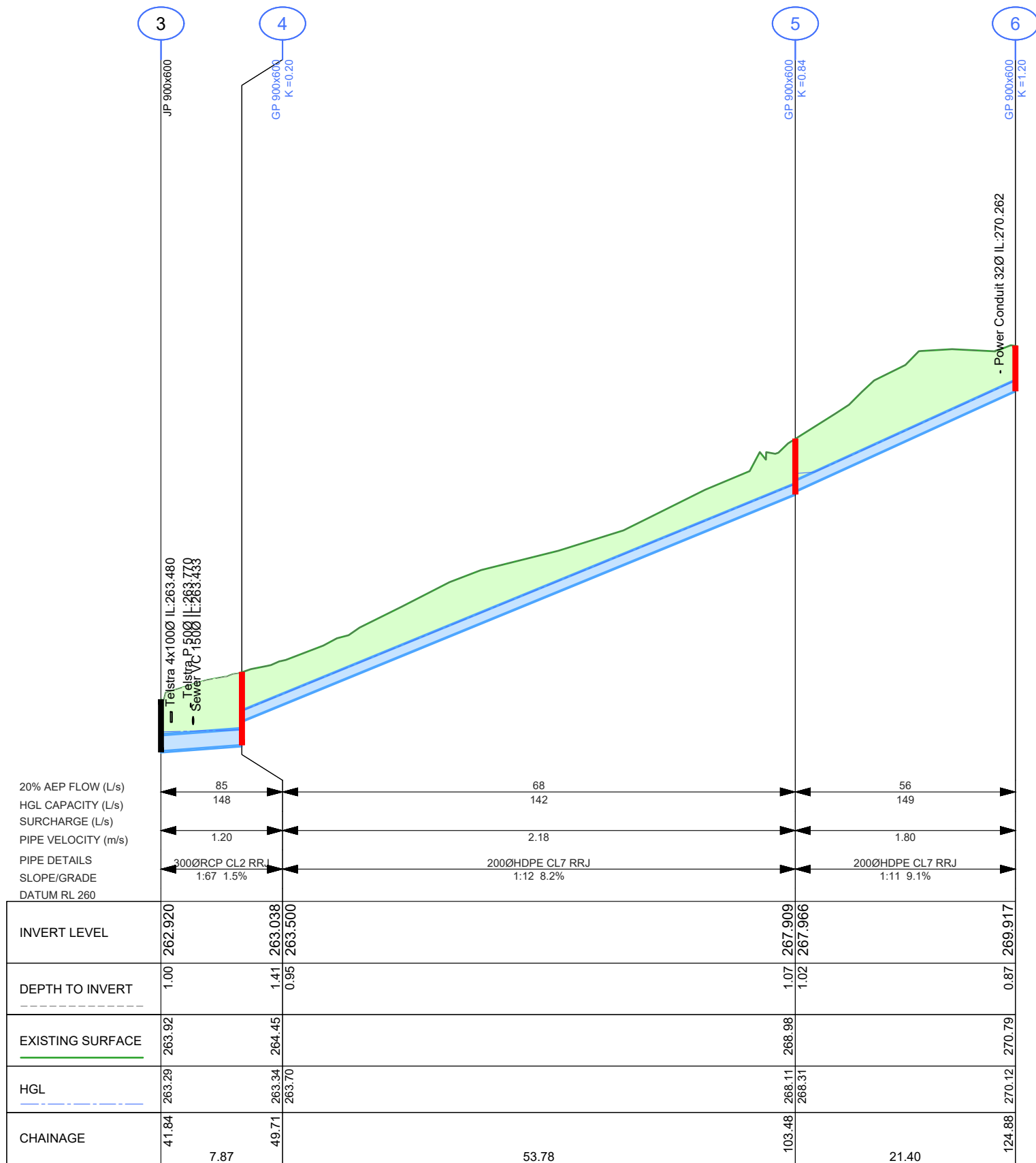
PLAN & PIT SCHEDULE

| | | |
|-------------------------|--------------------------|------------|
| Survey | A. SMITH | 01/01/2004 |
| Design | A. SMITH | 30/06/2022 |
| Checked | L. OLIVER | -/-/21 |
| Approved by | N. SARTORI | -/-/21 |
| Scale: 1 : 250 | Revision : A | |
| Original sheet size: A3 | File : GB5043.dwg | |
| Sheet: 2 OF 3 | Reference: GB5043 | |


**PRELIMINARY DESIGN
DRAFT 5**

Plot Date: 27/07/2022

Plotted By: ANDREW SMITH


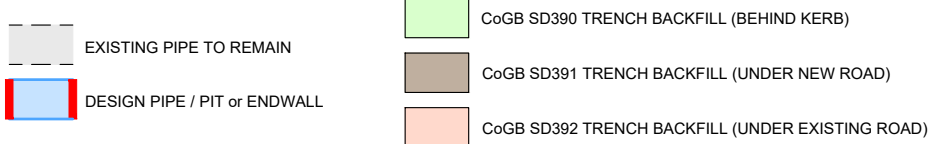


DRAINAGE LONGITUDINAL SECTION
SCALES: HORIZONTAL 1:500 VERTICAL 1:100

**DIAL 1100**
BEFORE YOU DIG

IMPORTANT!

The location of underground services have been derived from available information, however accuracy cannot be guaranteed. All existing service information should therefore be treated as indicative only, and service locations must be arranged prior to commencement of any excavation. The contractor will be held responsible for any damage caused to underground services.

| | | | | | | | | | | |
|--|--|-------------------|-------------|-------------|------|--|-------------------------|-------------------|------------|--|
| LEGEND | | AMENDMENTS | | | | CITY OF GREATER BENDIGO  PETHARD PL TO MARONG RD GOLDEN SQUARE EASEMENT DRAINAGE DRAINAGE LONG SECTION | Survey | A. SMITH | 01/01/2004 | <div>PRELIMINARY DESIGN DRAFT 5</div> <div>Plot Date: 27/07/2022 Plotted By: ANDREW SMITH</div> |
|  | | Revision | Description | Approved by | Date | | Design | A. SMITH | 30/06/2022 | |
| | | - | - | - | - | | Checked | L. OLIVER | -/-/21 | |
| | | | | | | | Approved by | N. SARTORI | -/-/21 | |
| | | | | | | | Scale: - | Revision: A | | |
| | | | | | | | Original sheet size: A3 | File: GB5043.dwg | | |
| | | | | | | | Sheet: 3 OF 3 | Reference: GB5043 | | |